

# Charles University and Czech Academy of Sciences resources

---

## Charles University



UNIVERZITA KARLOVA

### General info

CUNI uses Single Sign-on (SSO) mechanism for users authentication and authorisation. This feature unifies authentication of users into all the provided services (internal and external)

Users are identified by their login ID in the format **personal\_number@cuni.cz** (for example 45444544@cuni.cz)

For password ask [Card Service Center](#)

### Links

Charles University Authentication Service (CAS) - <https://ldapuser.cuni.cz/>

Web Applications / Webové aplikace Univerzity Karlovy - <https://is.cuni.cz/webapps>

Records Management / Spisová služba - <https://essuk.is.cuni.cz/>

Research Data Management / Management výzkumných dat - <https://openscience.cuni.cz/OSCI-61.html>

### Office365 / CUNI Sharepoint

In order to access CUNI sharepoint, you need to log in with CUNI credentials via Office365. - <https://login.microsoftonline.com/>

---

---

# Czech Academy of Sciences




## Intranet (internal web) access

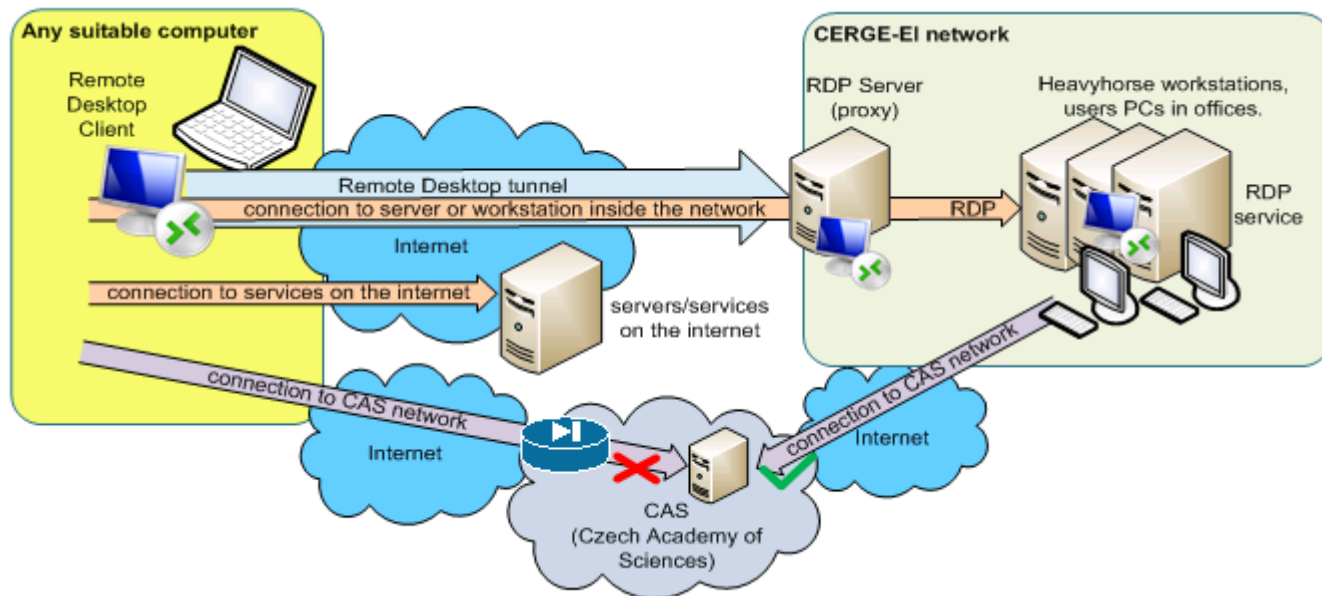
Internal pages <http://interni.avcr.cz/> are accessible ONLY from the selected academic networks. It is not allowed to access pages directly from internet.

### How to connect to CAS internal pages from outside

**Goal:** connect from the computer which has IP address from the allowed IP range.

 **Remote Desktop Connection** application can be find in Windows by typing '**remote**' in Search dialog (in Start menu) or just by runing program **mstsc.exe**

**Option 1 - via your office PC:** connect remotely to your office computer via Remote Desktop (RDP) and then connect to the CAS internal pages from the office computer.



- get DNS (computer) name of your computer (if not sure, ask IT about it, or see [this page](#))
- ask IT via [helpdesk@cerge-ei.cz](mailto:helpdesk@cerge-ei.cz) to enable remote connection to your computer
- **turn on your computer** permanently and assure yourself that the **sleep mode is disables** (see this [howto](#))
- **connect via RDP** from your private computer (see [instructions](#) if not sure how to connect)

**Option 2 - via Heavyhorse:** if you do not have office computer but you have an institutional notebook, you may connect by AnyConnect VPN and then to [Heavyhorse1 workstation](#) via RDP.



- be sure you have access to the internet
- connect via VPN (Cisco AnyConnect) or via RDP (see instructions [how to connect from the internet](#))
- RDP host to connect to is: **heavyhorse1.ad.cerge-ei.cz**
- log in with your network (Active Directory) username and password

**Finally:**

- open web browser at the remotely connected computer (either your PC or heavyhorse1)
- go to the web page <http://interni.avcr.cz/>- it should be accessible now...

Important! **Do not forget do logout from Heavyhorse after you finish your work.** If you just close RDP window, your session remains active and blocks resources from other users.

From: <https://wiki.cerge-ei.cz/> - **CERGE-EI Infrastructure Services**

Permanent link: <https://wiki.cerge-ei.cz/doku.php?id=public:institutions&rev=1712925056>

Last update: **2024-04-12 12:30**

