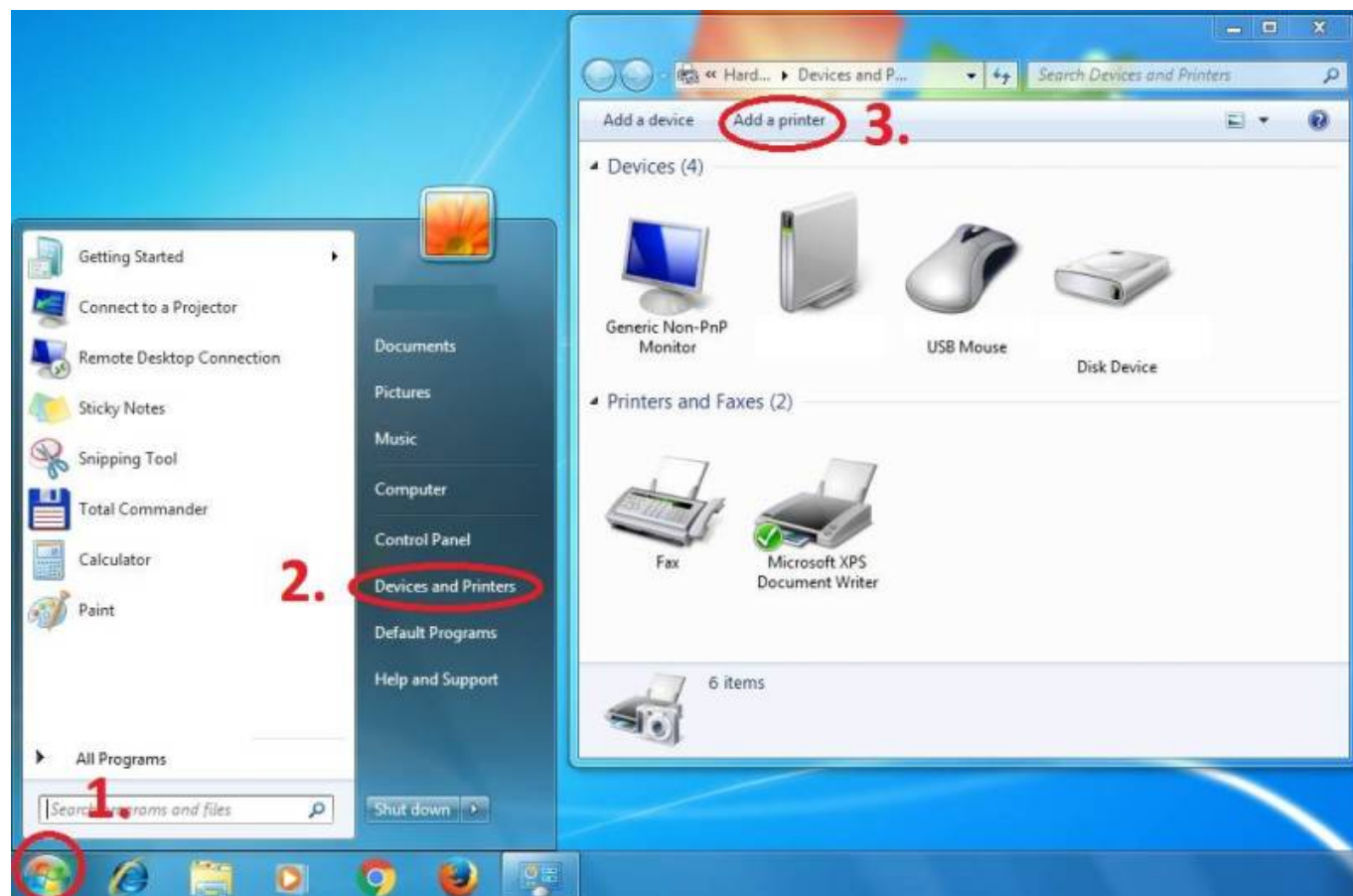
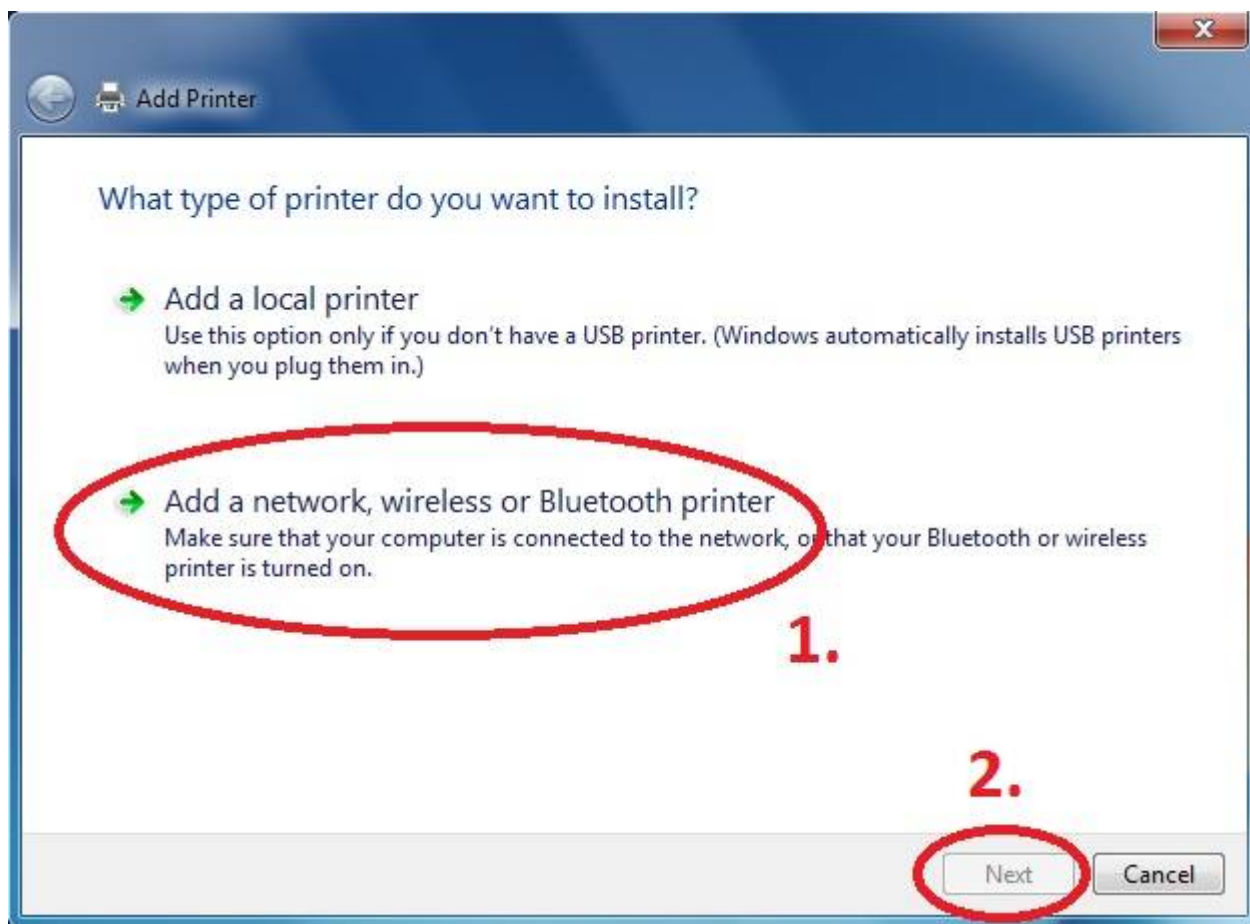


# Instructions for adding a Kyocera printer to user stations

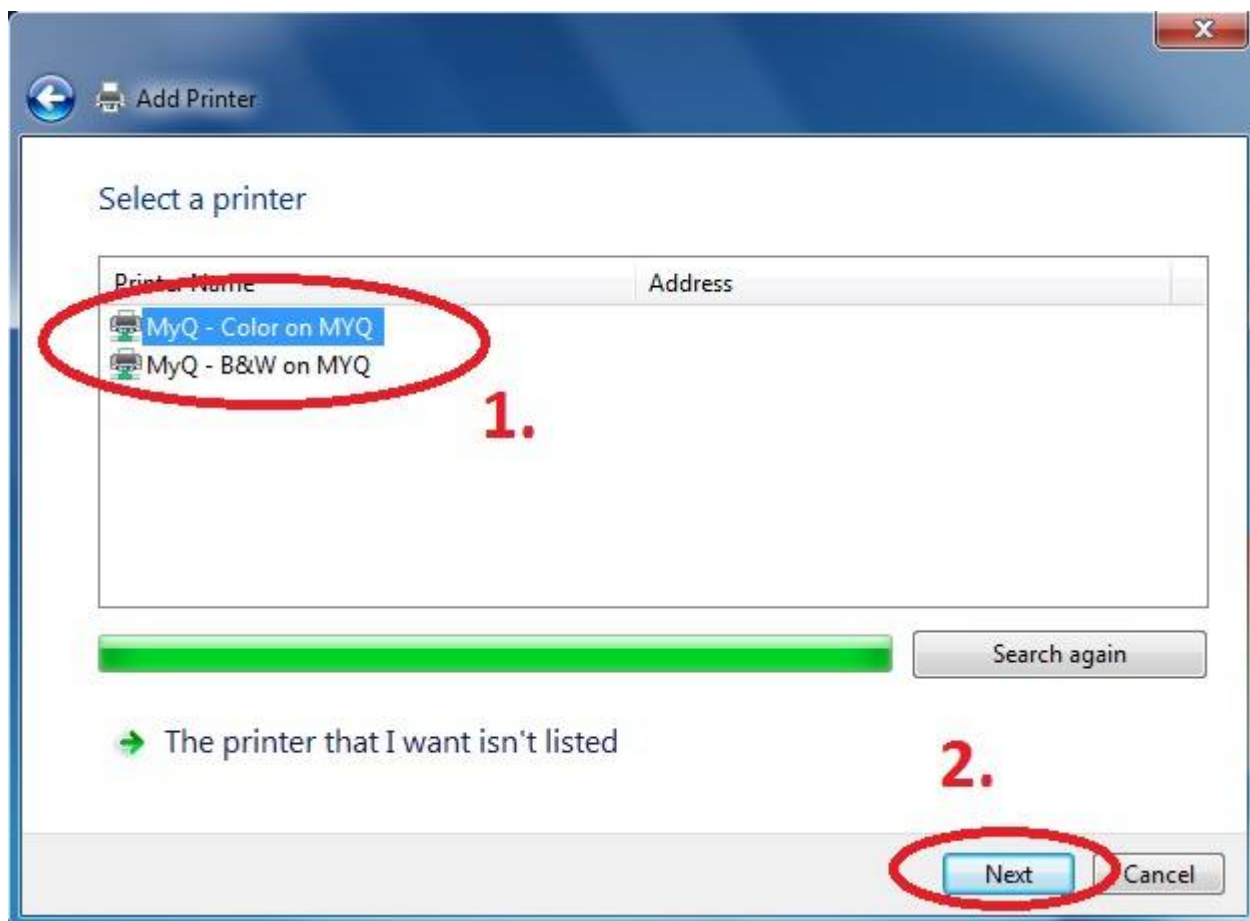
Press Start button → Devices and Printers → Add a Printer



**Add a network printer**



**Choose *MyQ - Color* and/or *MyQ - B&W* printer**



From:  
<https://wiki.cerge-ei.cz/> - **CERGE-EI Infrastructure Services**

Permanent link:  
[https://wiki.cerge-ei.cz/doku.php?id=public:print:cerge\\_desktops&rev=1515669062](https://wiki.cerge-ei.cz/doku.php?id=public:print:cerge_desktops&rev=1515669062)

Last update: **2018-01-11 11:11**

