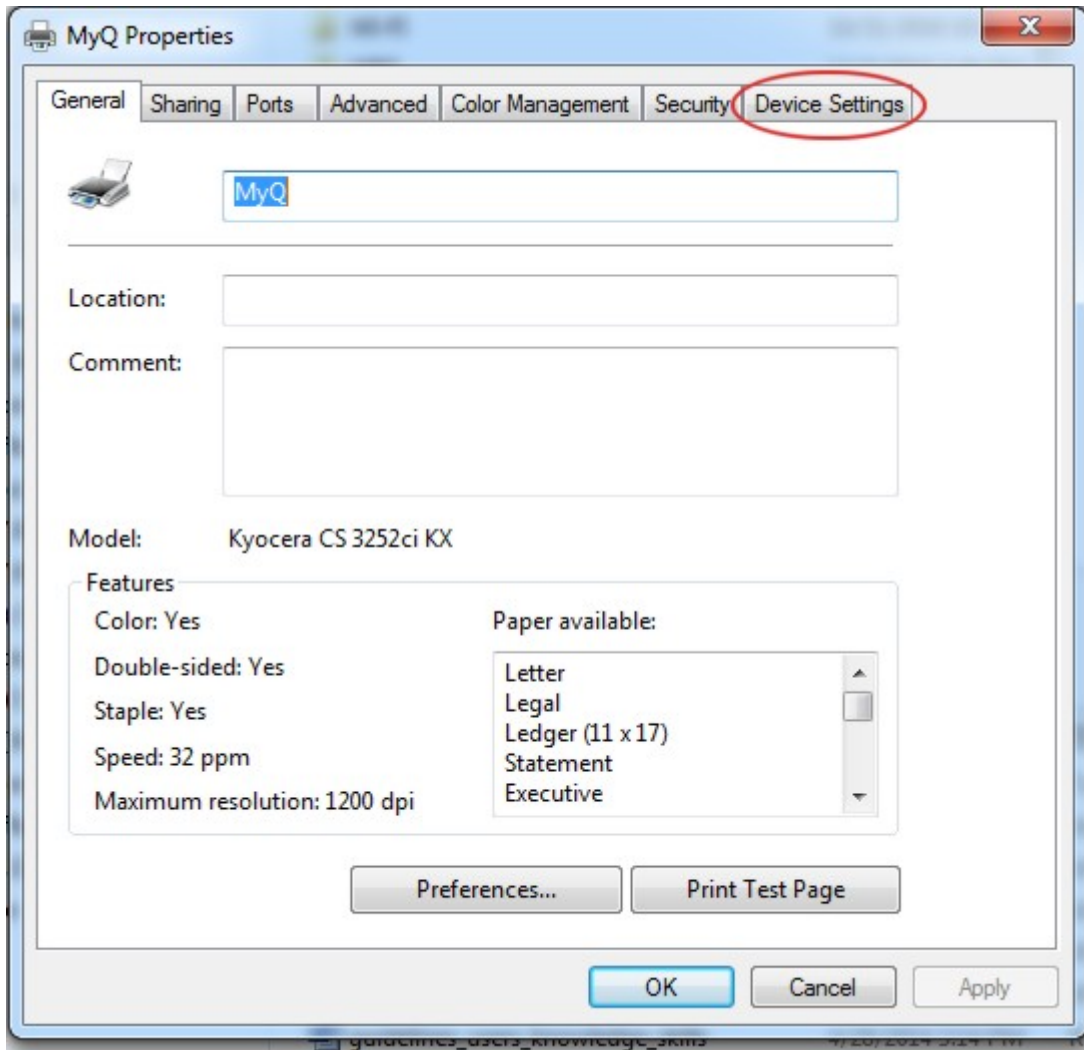


Profile Configuration on Kyocera CS 3252ci KX Multifunction Device

- Providing you have Kyocera CS 3252ci KX multifunction device properly installed and fully functional select (double click) this device in **Devices and Printers** pop-up menu option.
- Select **Printer** and then **Properties** in pop-up menu



- Select **Device Settings** if you want to use e.g. the inner finisher



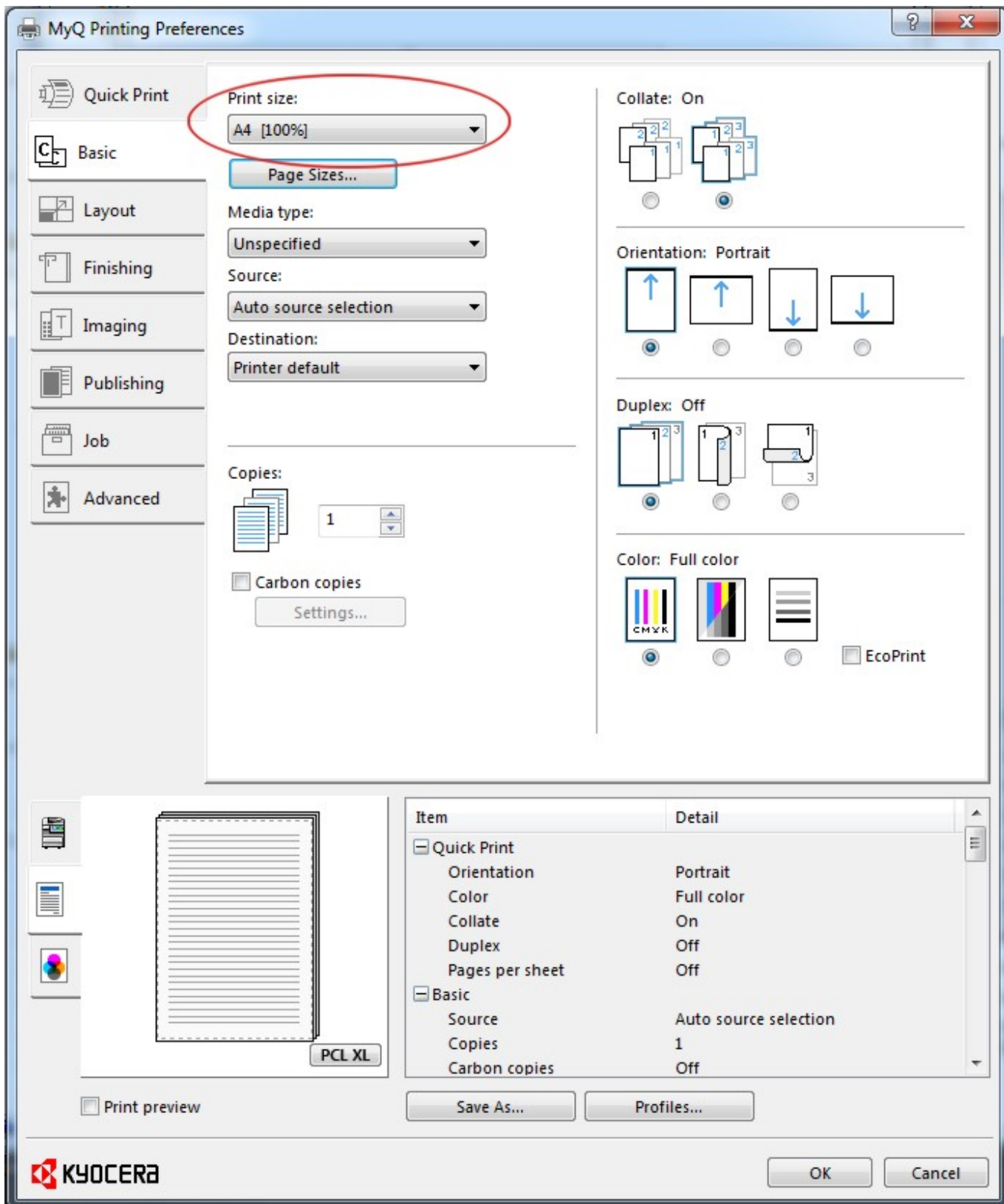
- Select **Inner finisher** and click OK



- Go to **General** option and click on **Propertie** to configure printing preferences



- In **Basic** option select **Print size** (A4 [100%]), orientation, duplex etc.



- Select **Finishing** to configure e.g. **Staple**

MyQ Printing Preferences

Quick Print

Basic

Layout

Finishing

Imaging

Publishing

Job

Advanced

Separation: Off

Tri-Fold:

Print side: Inside

Direction of fold: Left to right/Top to bottom

Number of sheets: 1

Bi-Fold:

Number of sheets: 1

Binding edge:

Position: Long edge (left)

Gutter...

Staple:

Position: Upper left

Sheets per group: All

Punch: Off

Print preview

Save As... Profiles...

OK Cancel

Item	Detail
Quick Print	
Orientation	Portrait
Color	Full color
Collate	On
Duplex	Off
Pages per sheet	Off
Basic	
Source	Auto source selection
Copies	1
Carbon copies	Off

From: <https://wiki.cerge-ei.cz/> - CERGE-EI Infrastructure Services

Permanent link: https://wiki.cerge-ei.cz/doku.php?id=public:print:kyocera_profile&rev=1489589180

Last update: 2017-03-15 14:46



