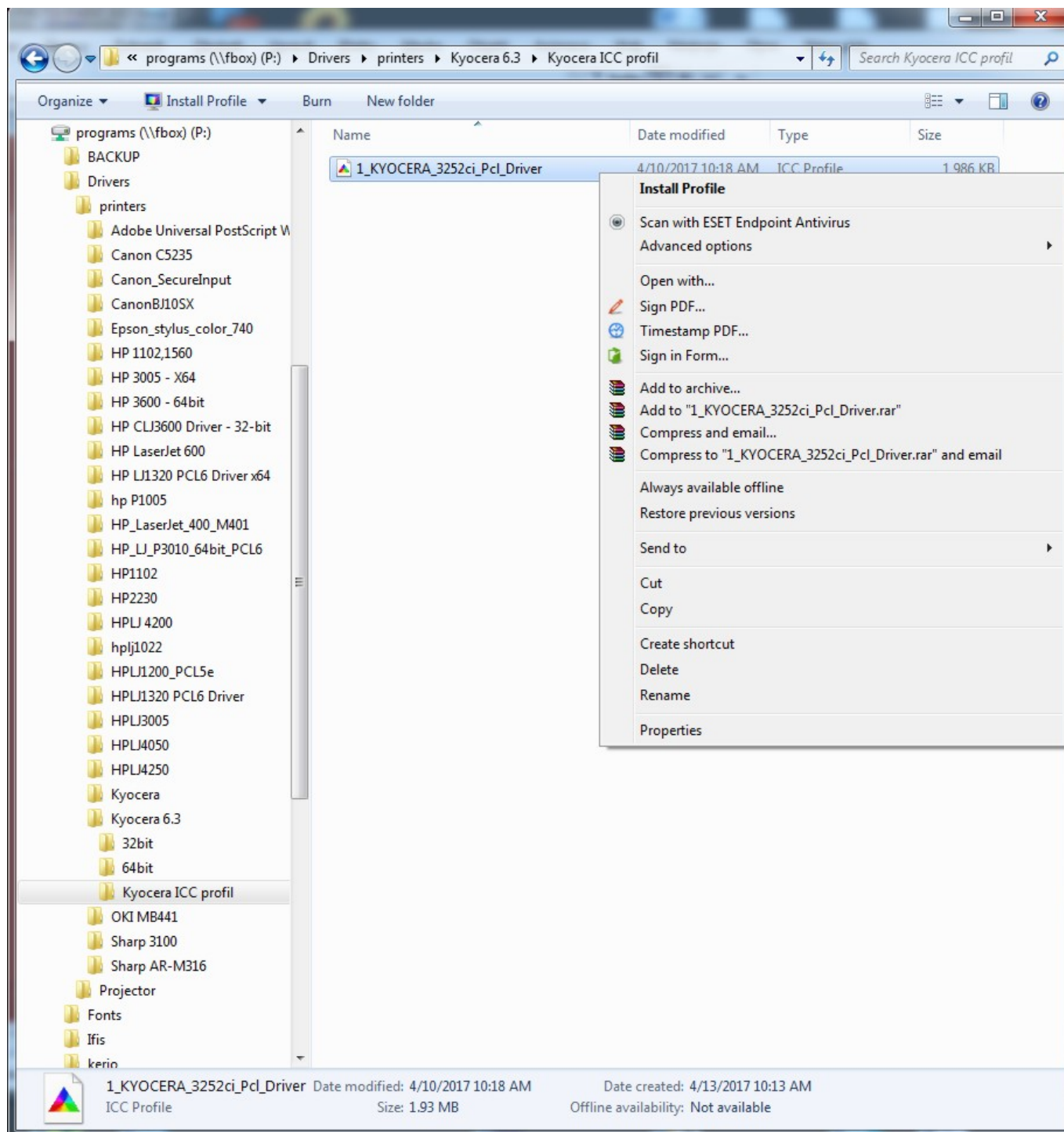


How to Use a Color Profile on MyQ Multifunction Devices

1. Install the profile driver in Windows

Find the respective profile **1_KYOCERA_3252ci_Pcl_Driver** on \\fbox\programs\drivers\printers\kyocera 6.3\Kyocera ICC profil and install it in your Windows operating system.



2. Set up the color profile in the MyQ multifunction device's properties

In MyQ multifunction device's properties select **Color Management**



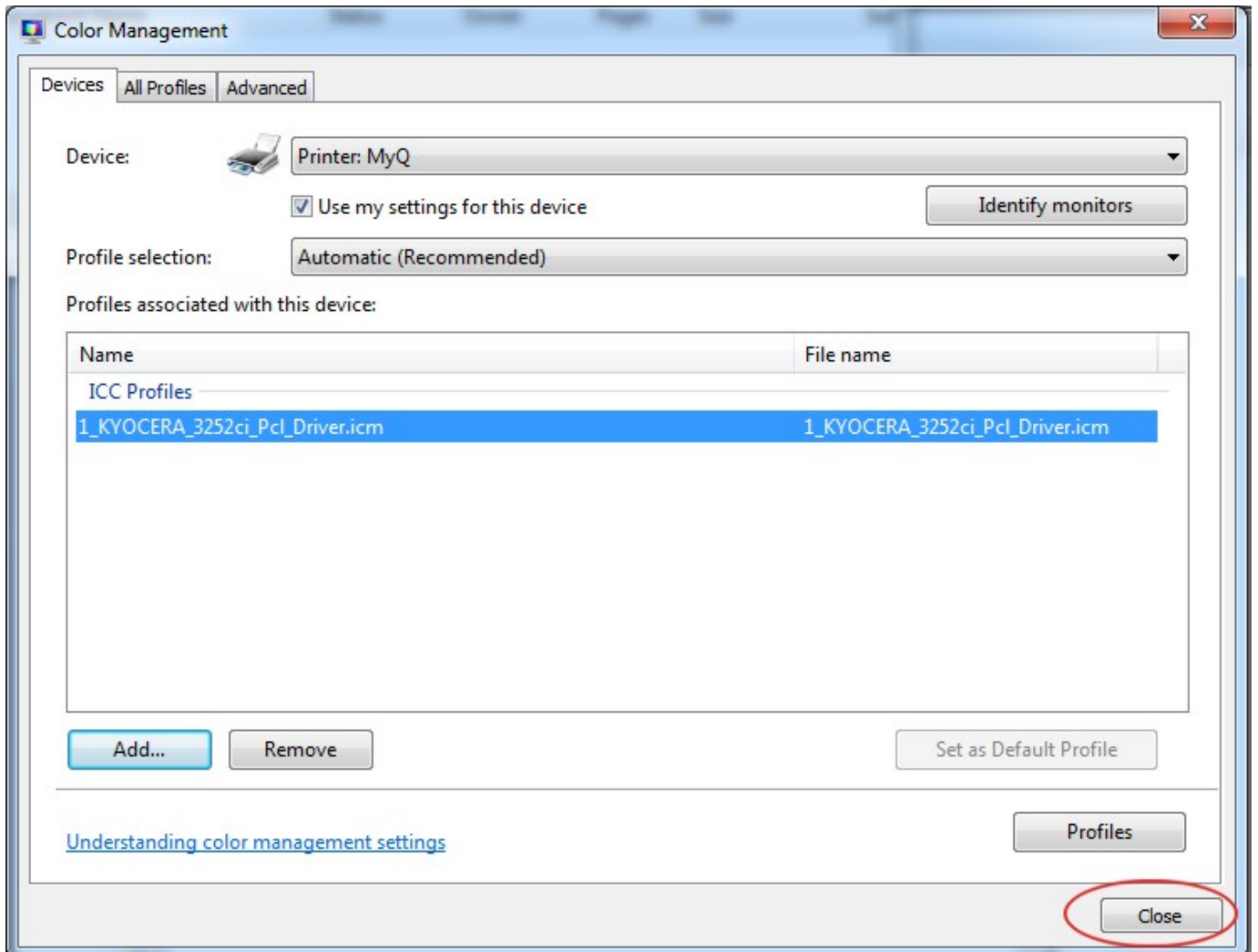
Select MyQ multifunction device and add the respective profile



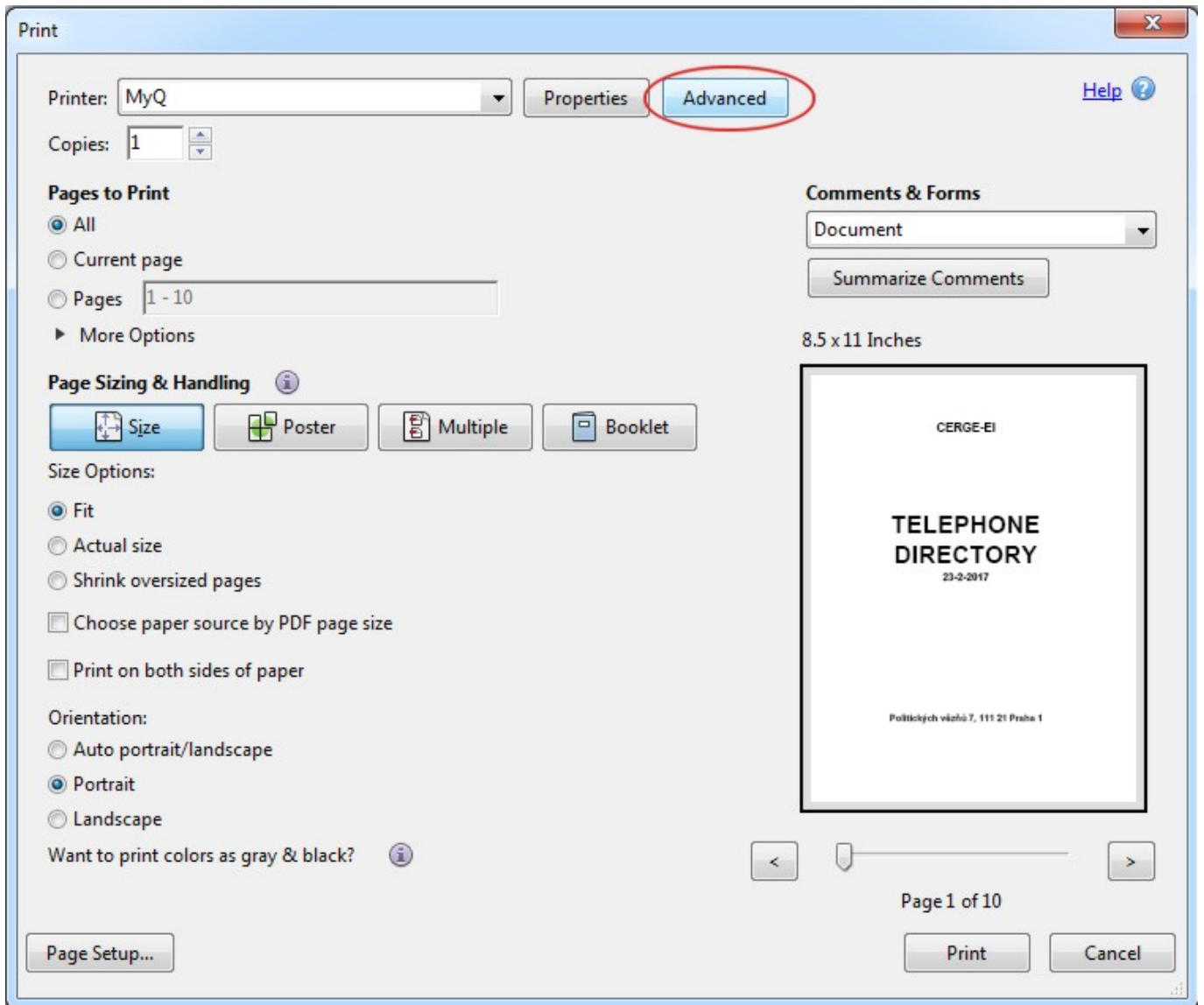
Select MyQ multifunction device and press **Add**



Add the **1_KYOCERA_3252ci_Pcl_Driver** profile



Add the **1_KYOCERA_3252ci_Pcl_Driver** profile



From: <https://wiki.cerge-ei.cz/> - CERGE-EI Infrastructure Services

Permanent link: https://wiki.cerge-ei.cz/doku.php?id=public:print:myq_color_profile&rev=1495609499

Last update: 2017-05-24 07:04

