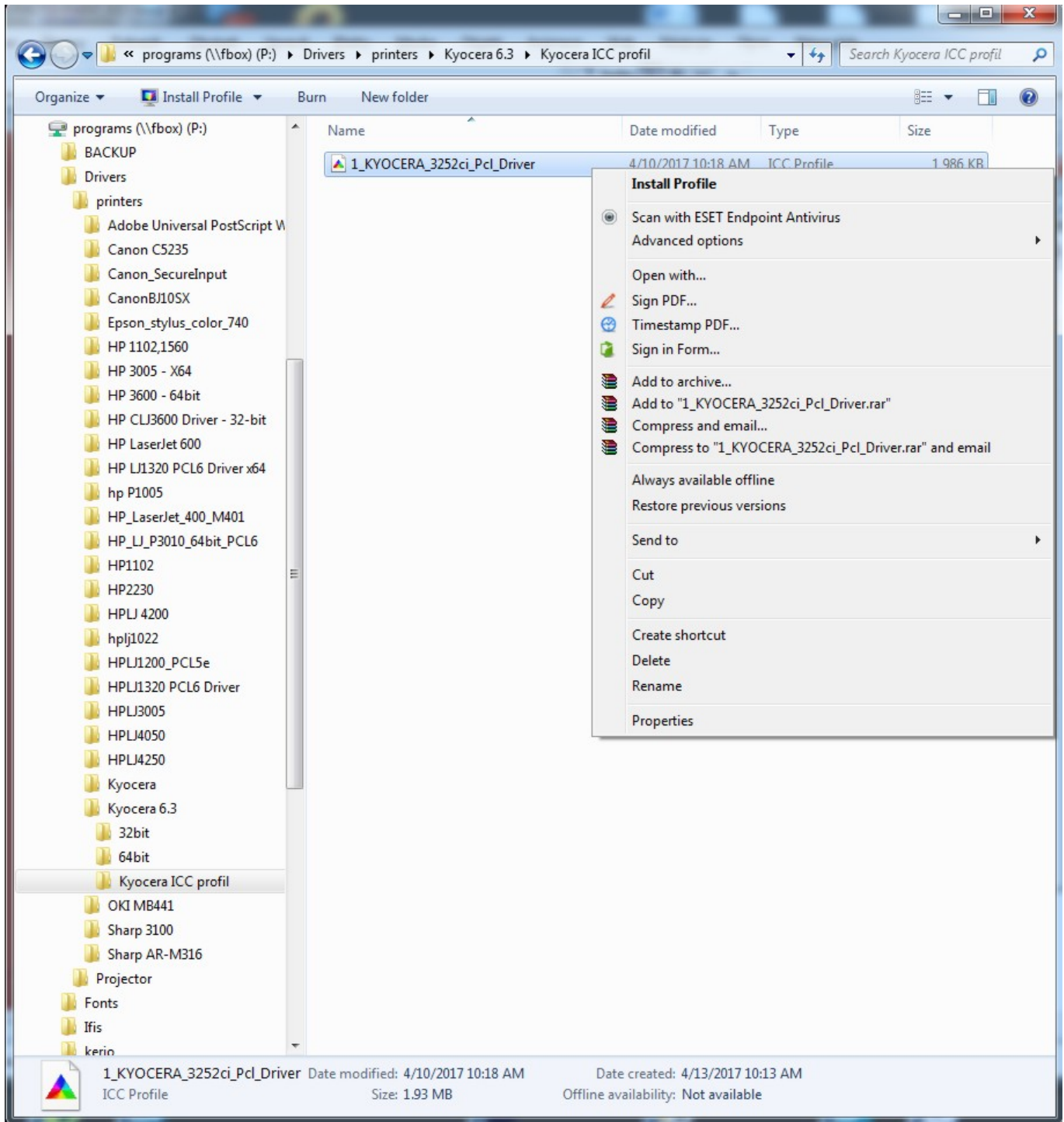


How to Use a Color Profile on MyQ Multifunction Devices

1. Install the profile driver in Windows

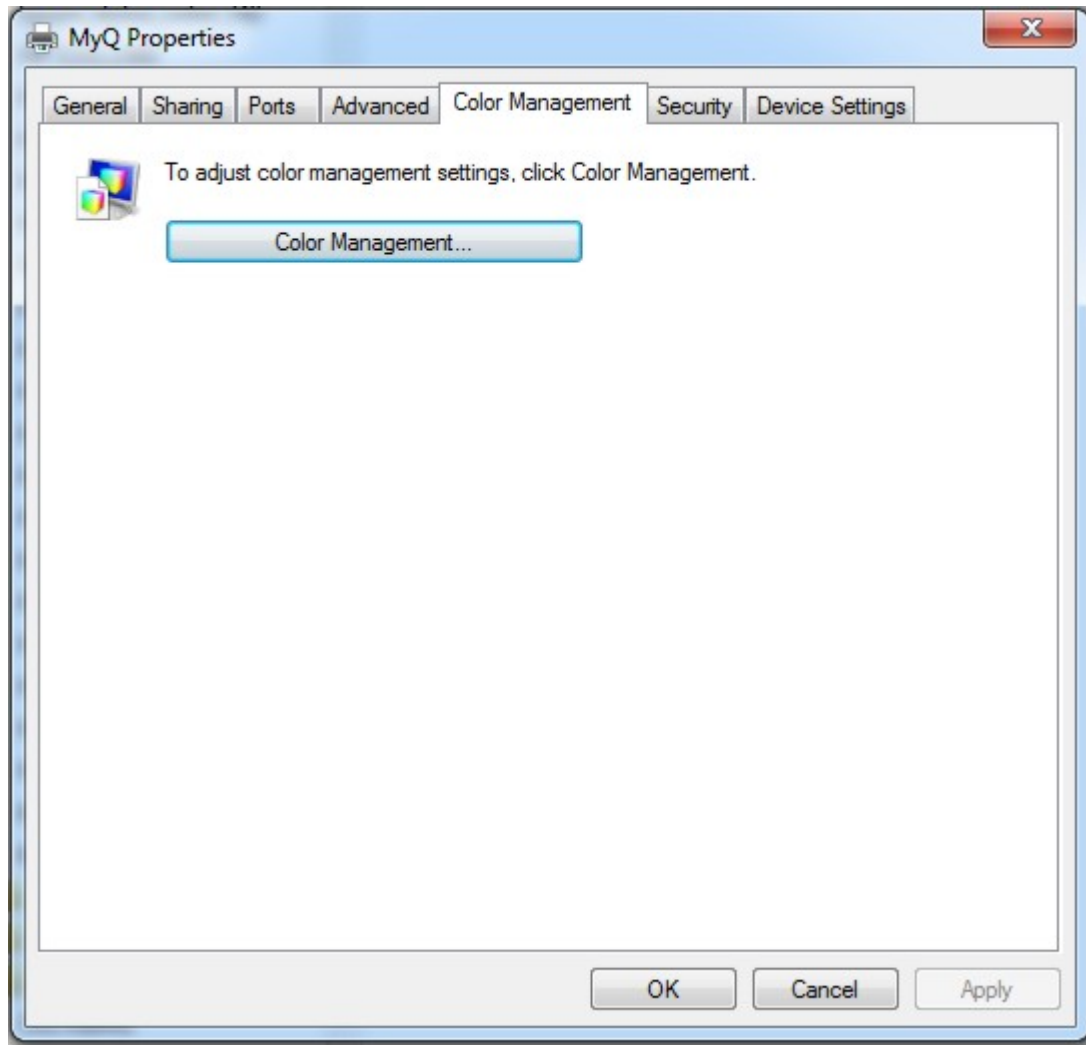
Find the respective profile **1_KYOCERA_3252ci_Pcl_Driver** on \\fbox\programs\drivers\printers\kyocera 6.3\Kyocera ICC profil and install it in your Windows operating system.

1_KYOCERA_3252ci_Pcl_Driver.icm	1_KYOCERA_3252ci_Pcl_Driver.icm	Printer
---------------------------------	---------------------------------	---------

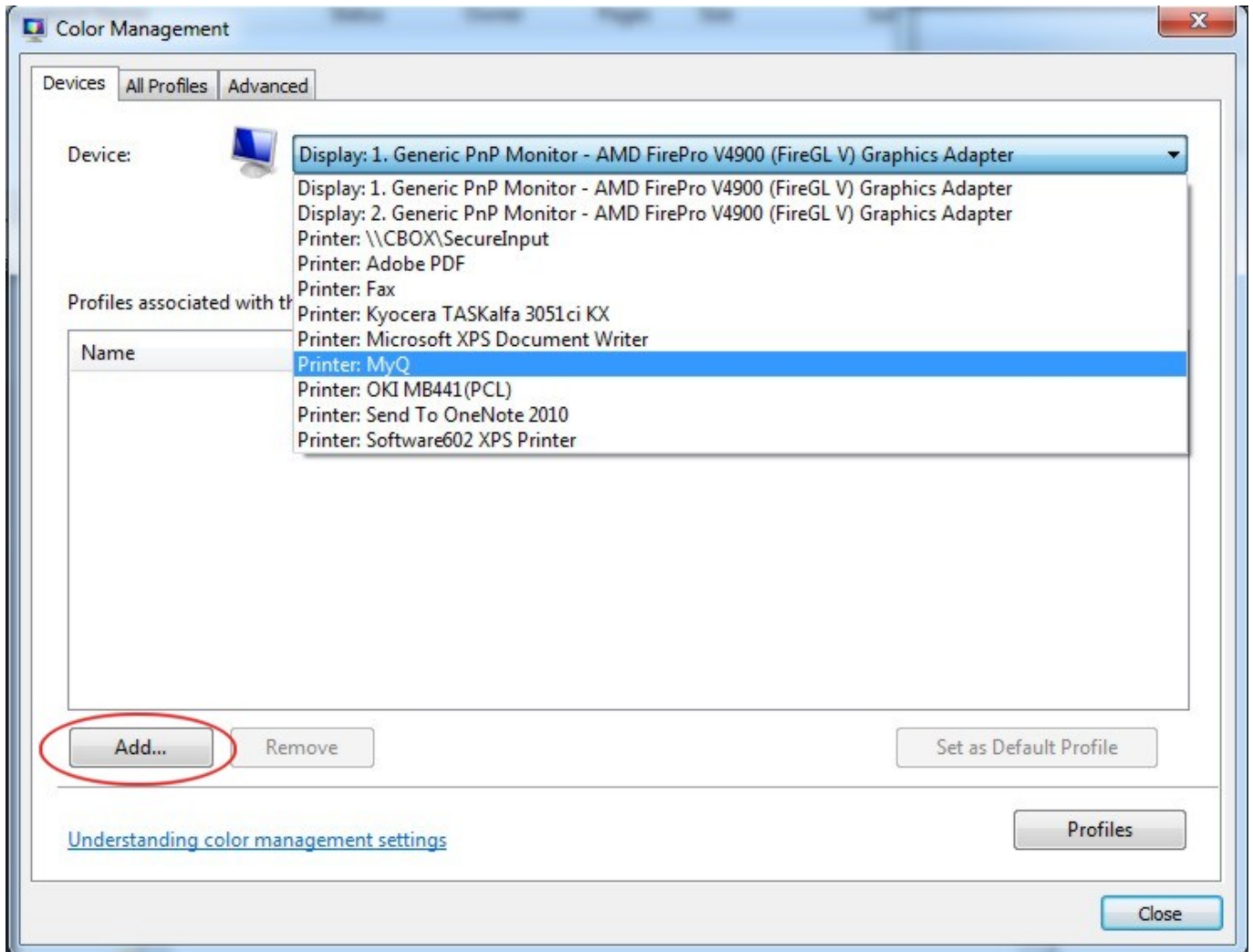


2. Set up the color profile in the MyQ multifunction device's properties

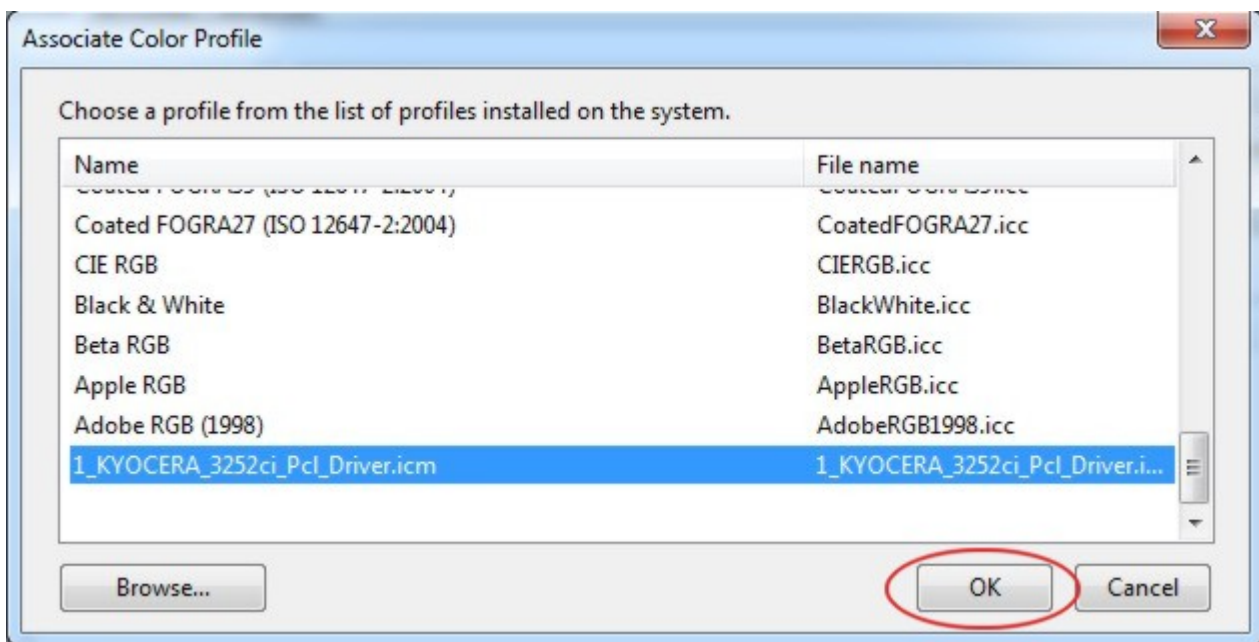
In MyQ multifunction device's properties select **Color Management**



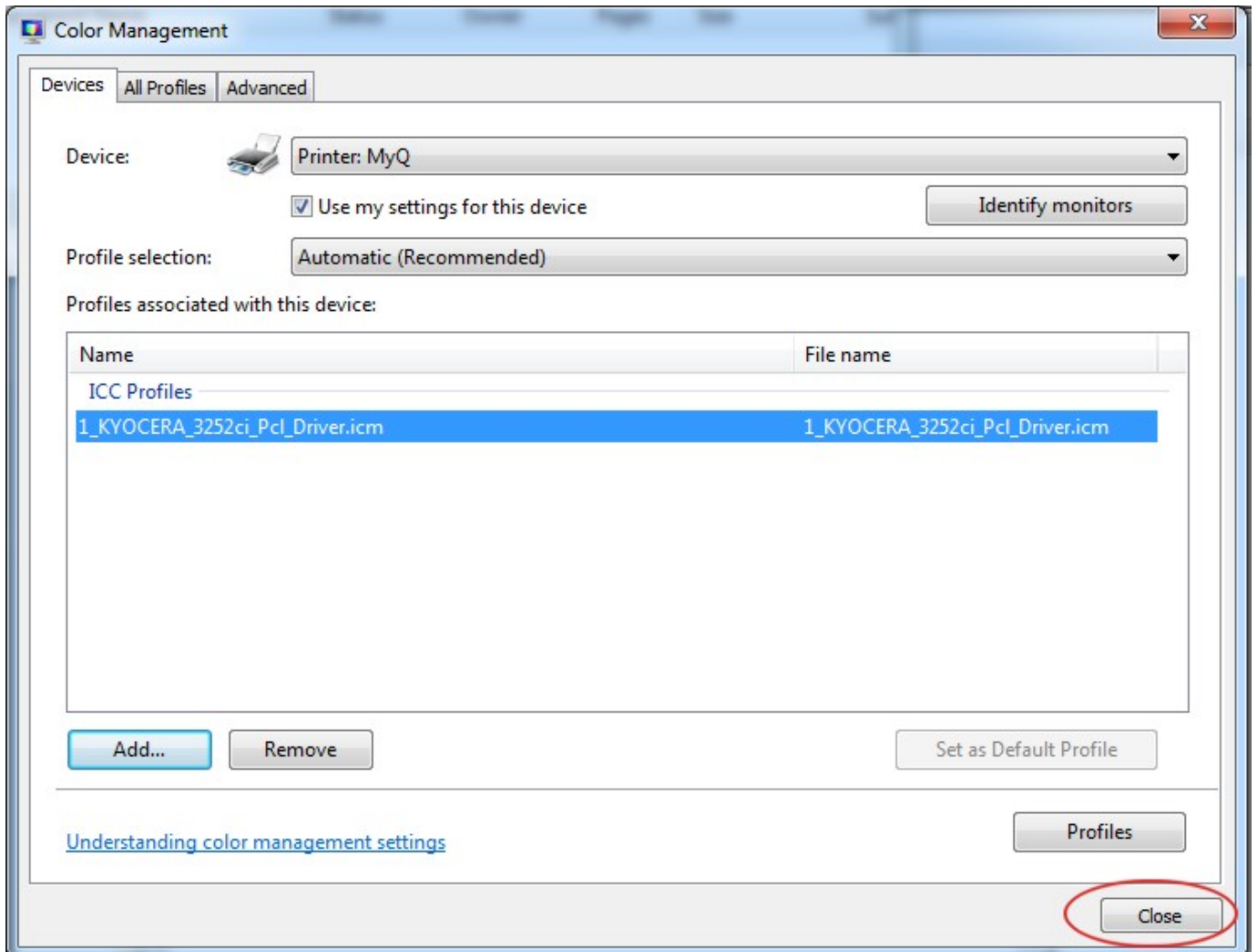
Select MyQ multifunction device and add the respective profile



Select MyQ multifunction device and press **Add**

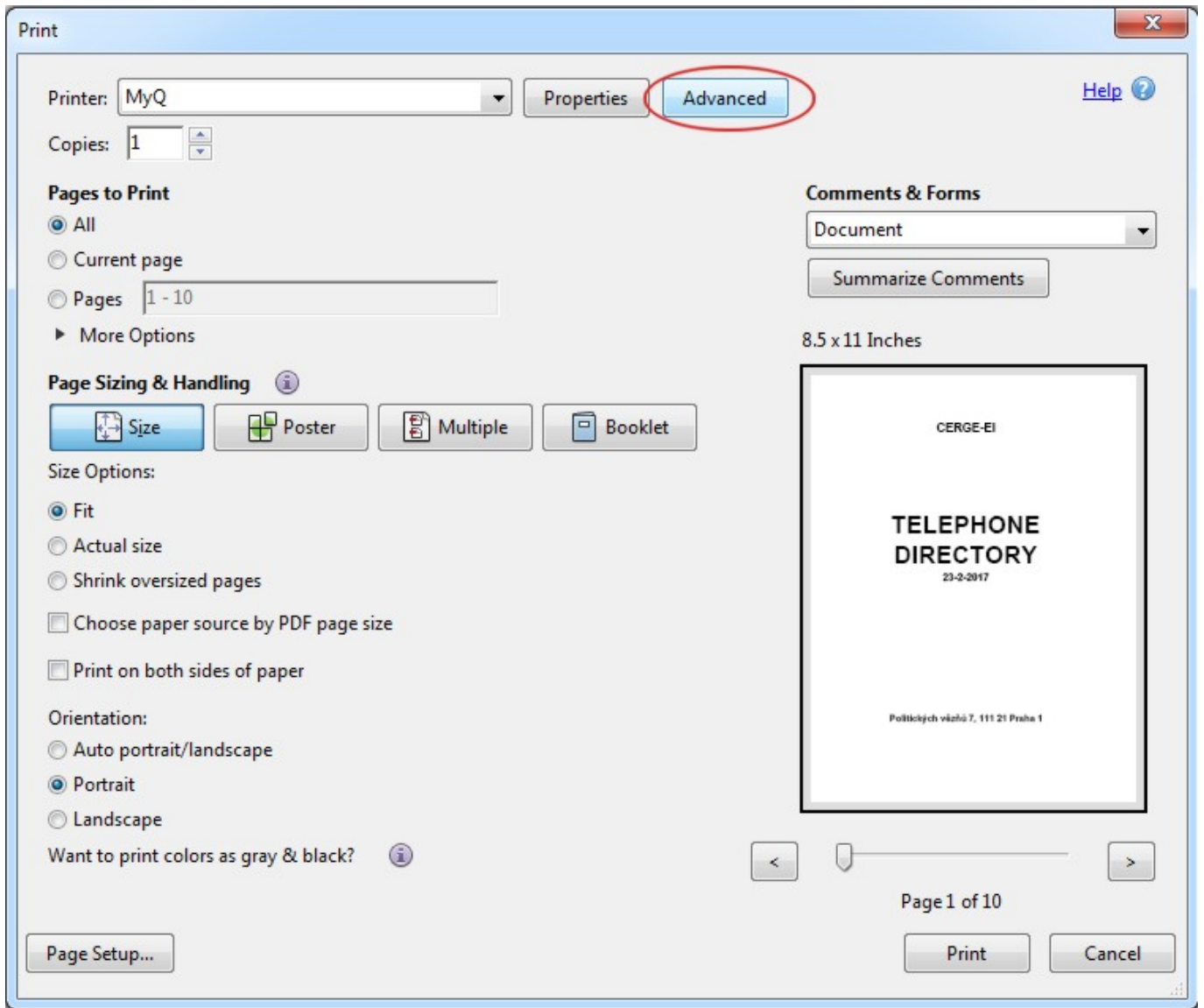


Add the **1_KYOCERA_3252ci_Pcl_Driver** profile and press **Close**

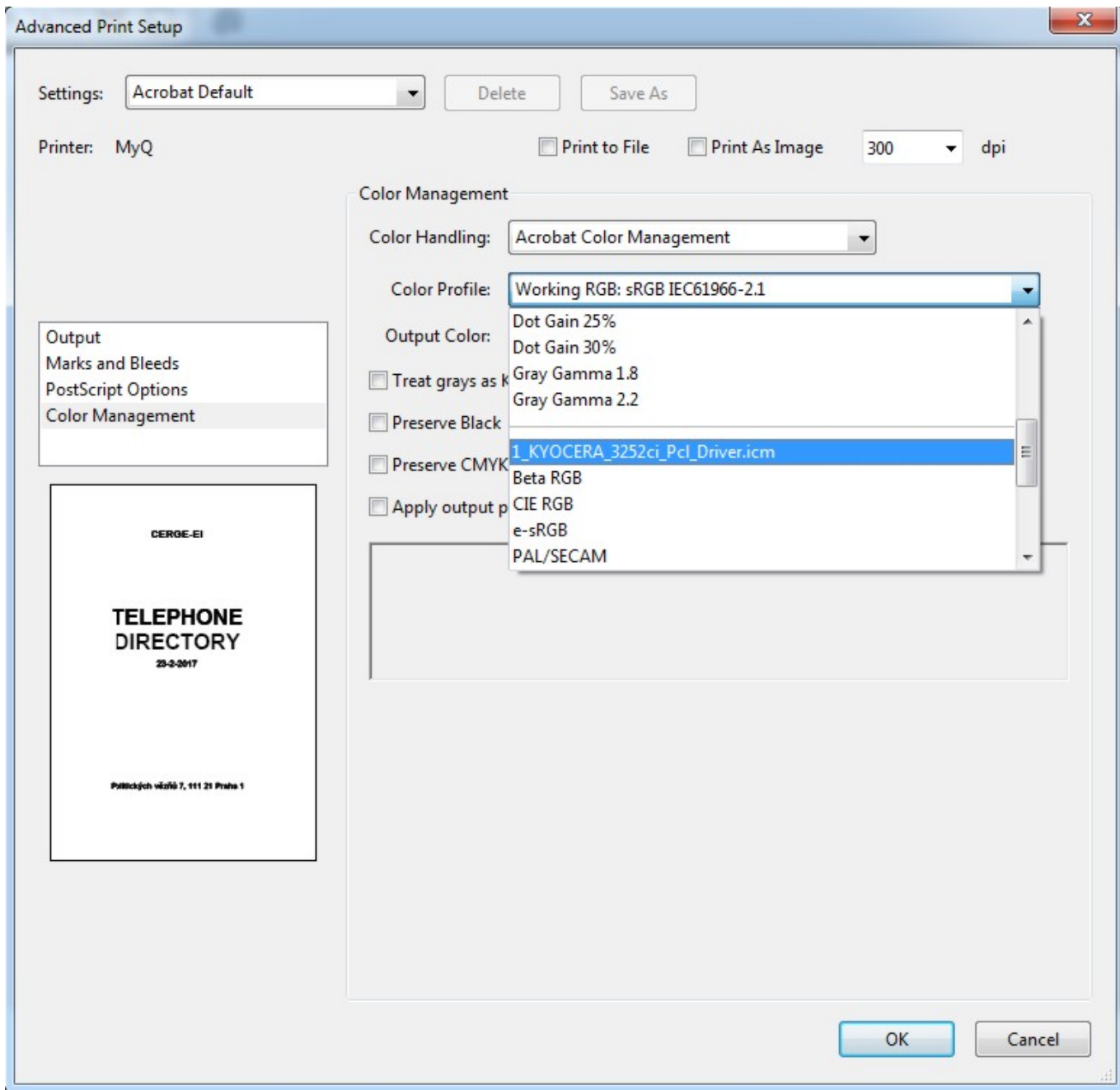


3. Set up the color profile in Adobe Acrobat printing properties

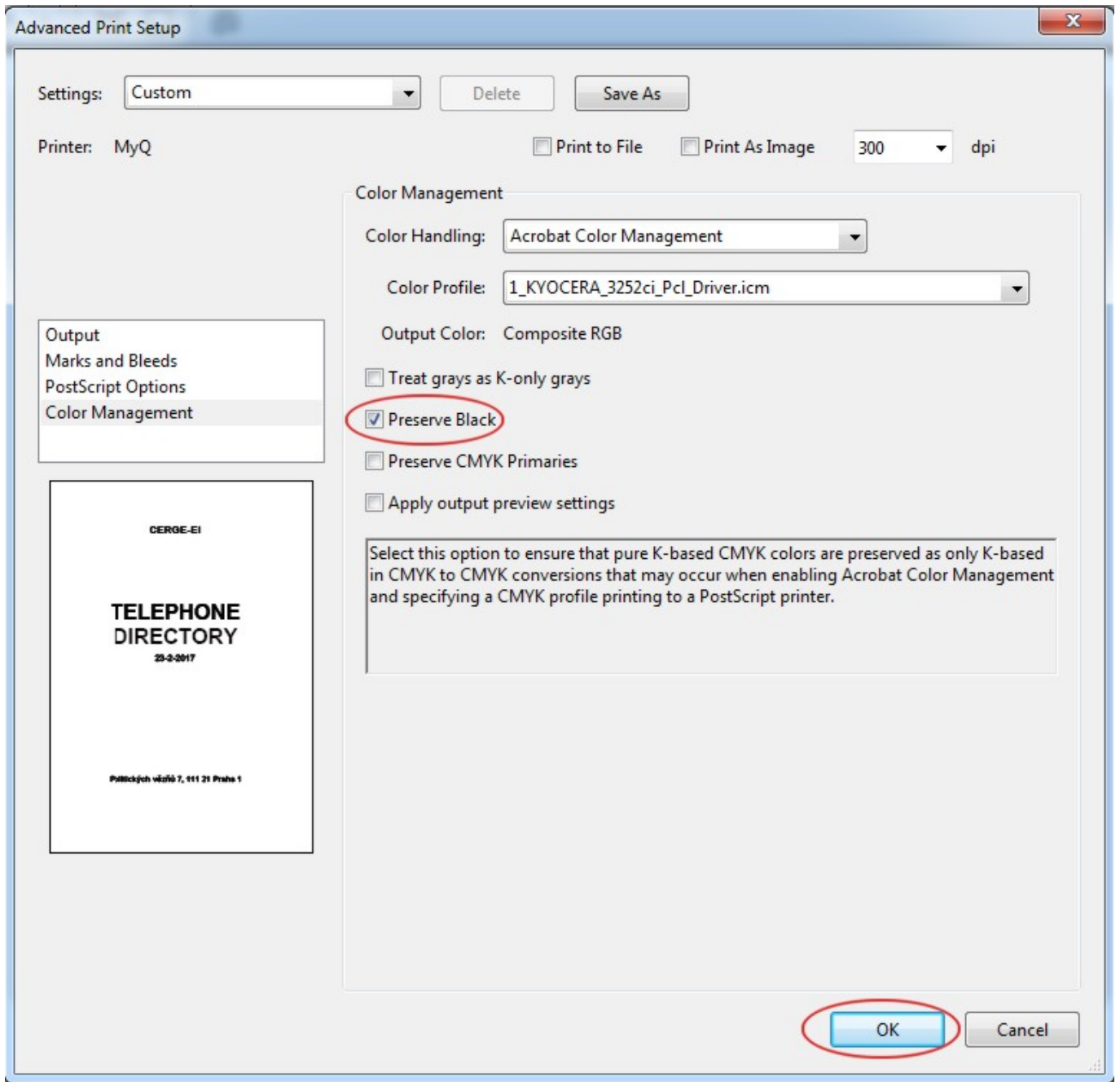
Open the desired document in Adobe Acrobat, select **Print** and **MyQ** multifunction device. Press **Advanced** printing properties.



Select **1_KYOCERA_3252ci_Pcl_Driver** color profile



Eventually check **Preserve Black** box and press **OK**



PRINT THE DOCUMENT

From:
<https://wiki.cerge-ei.cz/> - CERGE-EI Infrastructure Services

Permanent link:
https://wiki.cerge-ei.cz/doku.php?id=public:print:myq_color_profile&rev=1574346604

Last update: 2019-11-21 14:30

