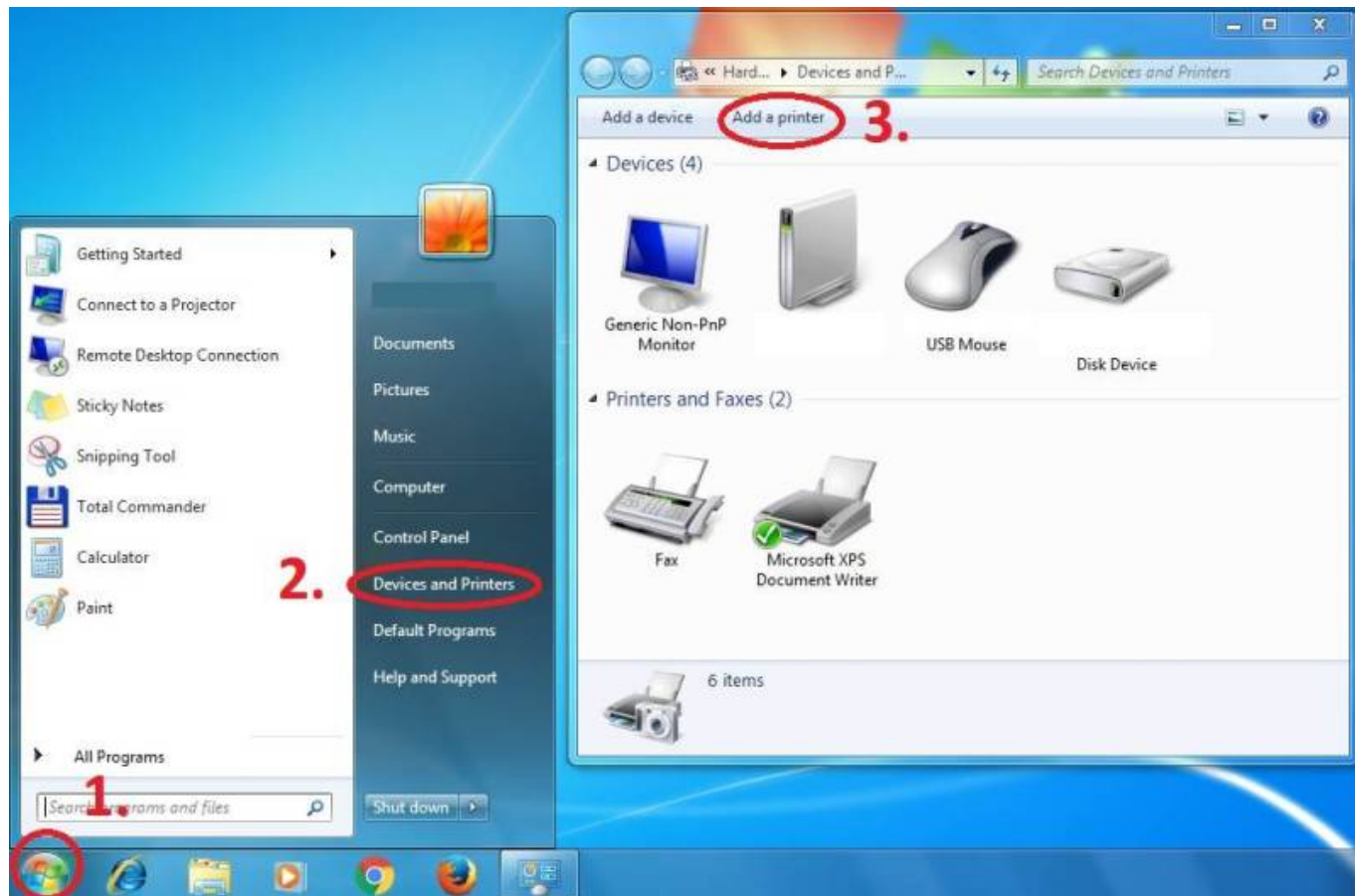


# Instructions for adding a Kyocera printer to user stations

Press Start button → Devices and Printers → Add a Printer



Add a local printer



### Create a new port: Standard TCP/IP Port



### Enter Hostname - MyQ



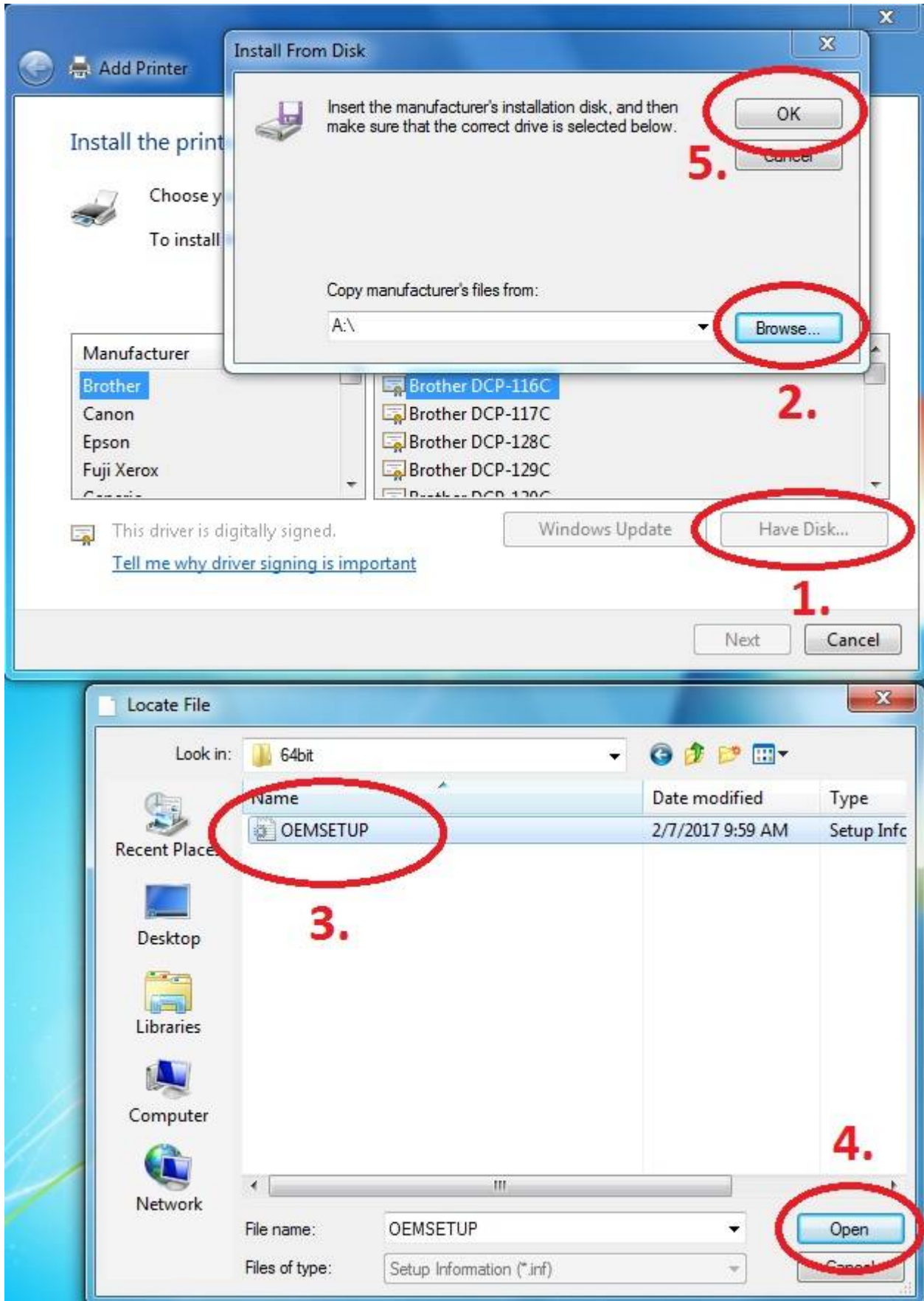
### Customize Settings



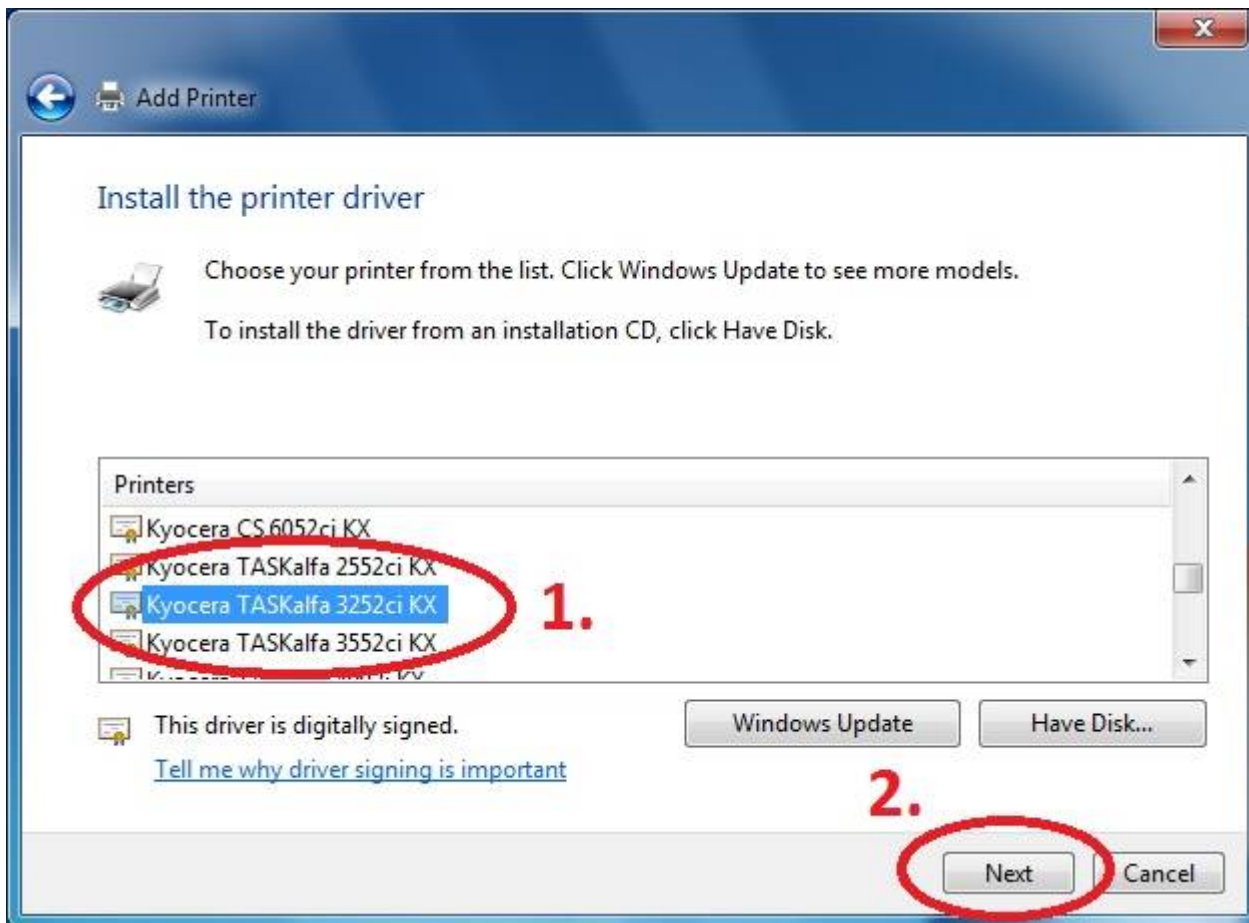
Download driver and unzip it to the local folder (for example c:\driver\). Choose 32-bit or 64-bit version depending on your system:

- 32-bit driver
- 64-bit driver

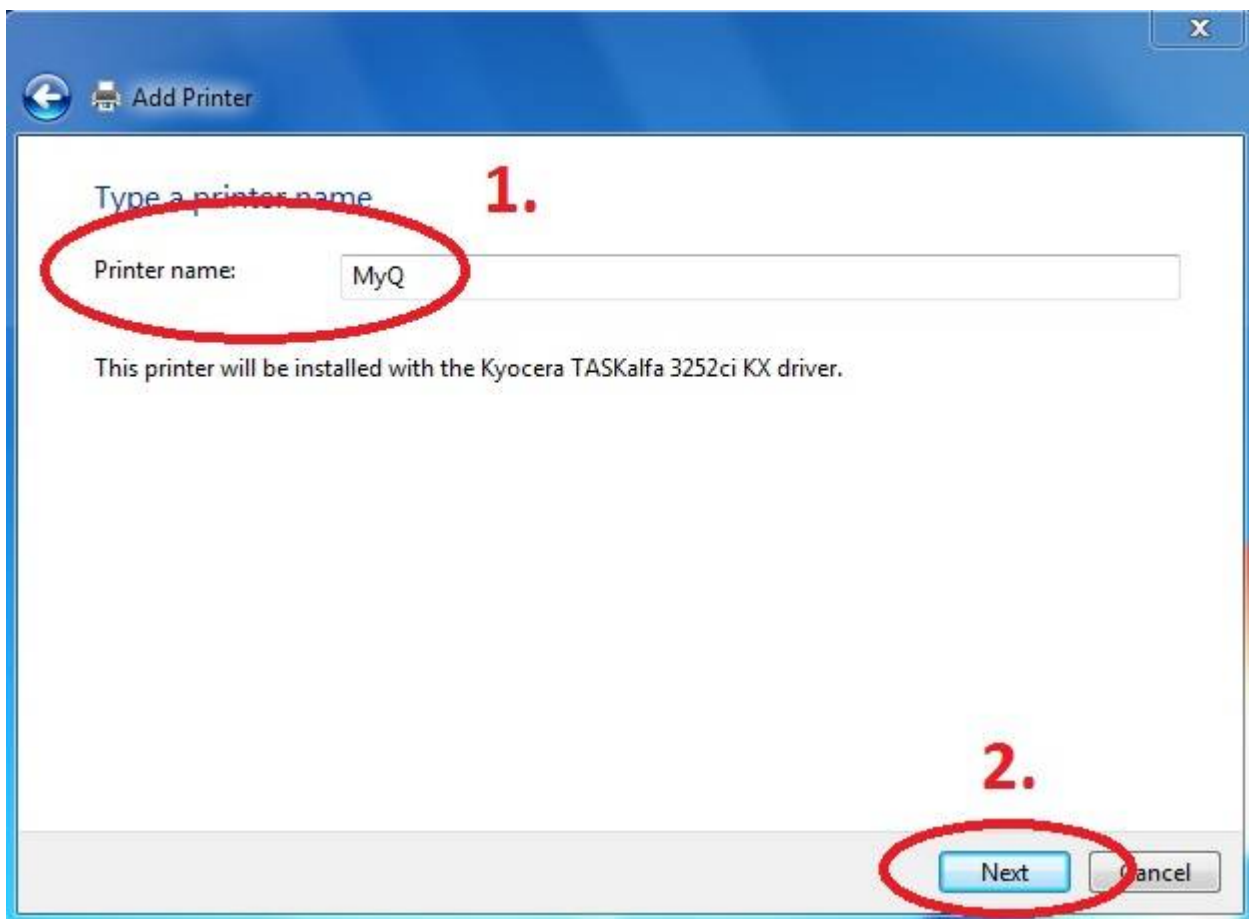
**Press Have Disk... Navigate to the driver folder (for example c:\driver\64-bit\)** and select **“OEMSETUP”**.



**Choose Kyocera TASKalfa 3252ci KX**



**Rename Printer and finish installation.**





important box

From:

<https://wiki.cerge-ei.cz/> - **CERGE-EI Infrastructure Services**

Permanent link:

[https://wiki.cerge-ei.cz/doku.php?id=public:print:myq\\_install&rev=1510583461](https://wiki.cerge-ei.cz/doku.php?id=public:print:myq_install&rev=1510583461)

Last update: **2017-11-13 14:31**

