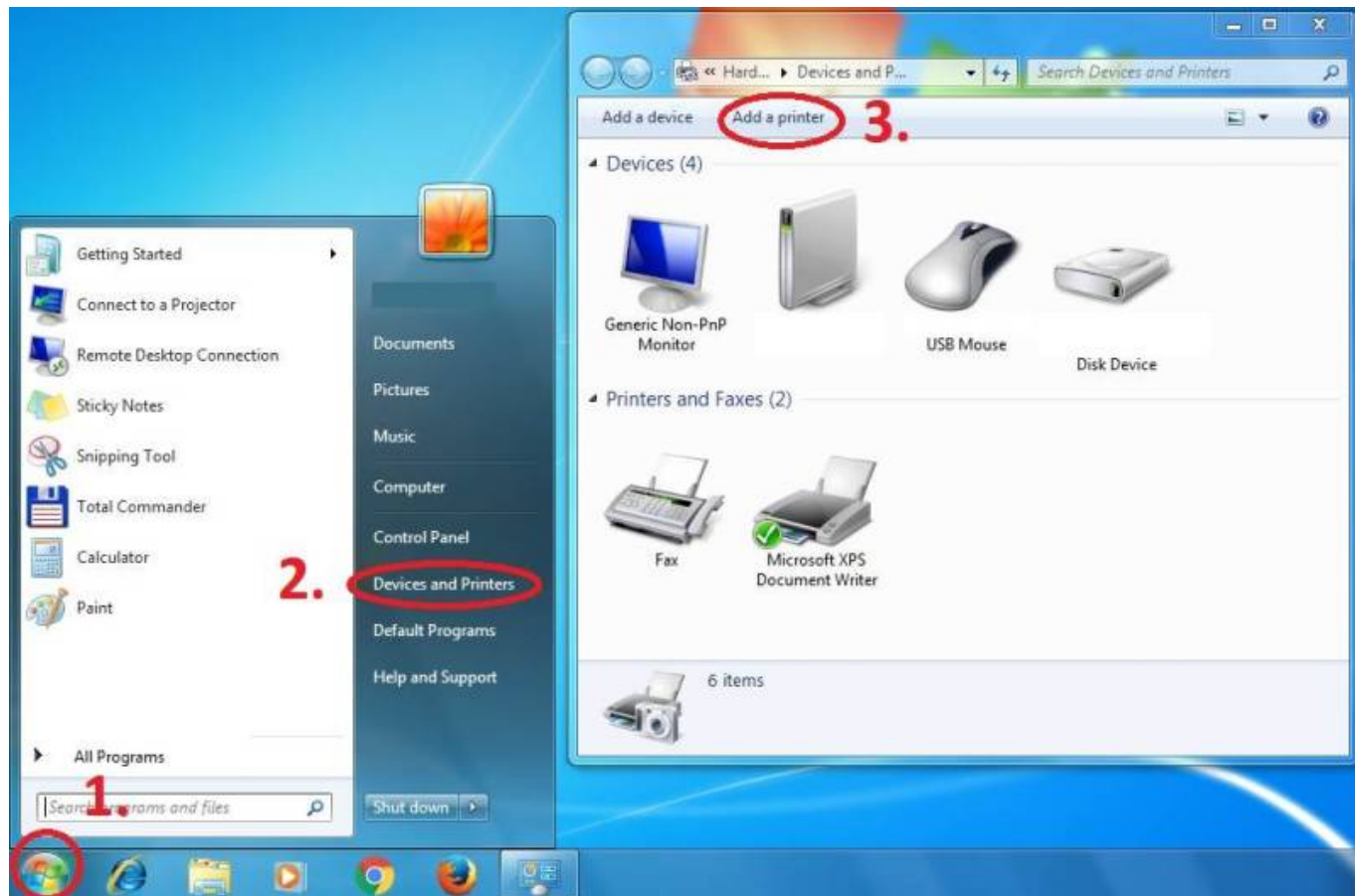


Instructions for adding a Kyocera printer to user stations

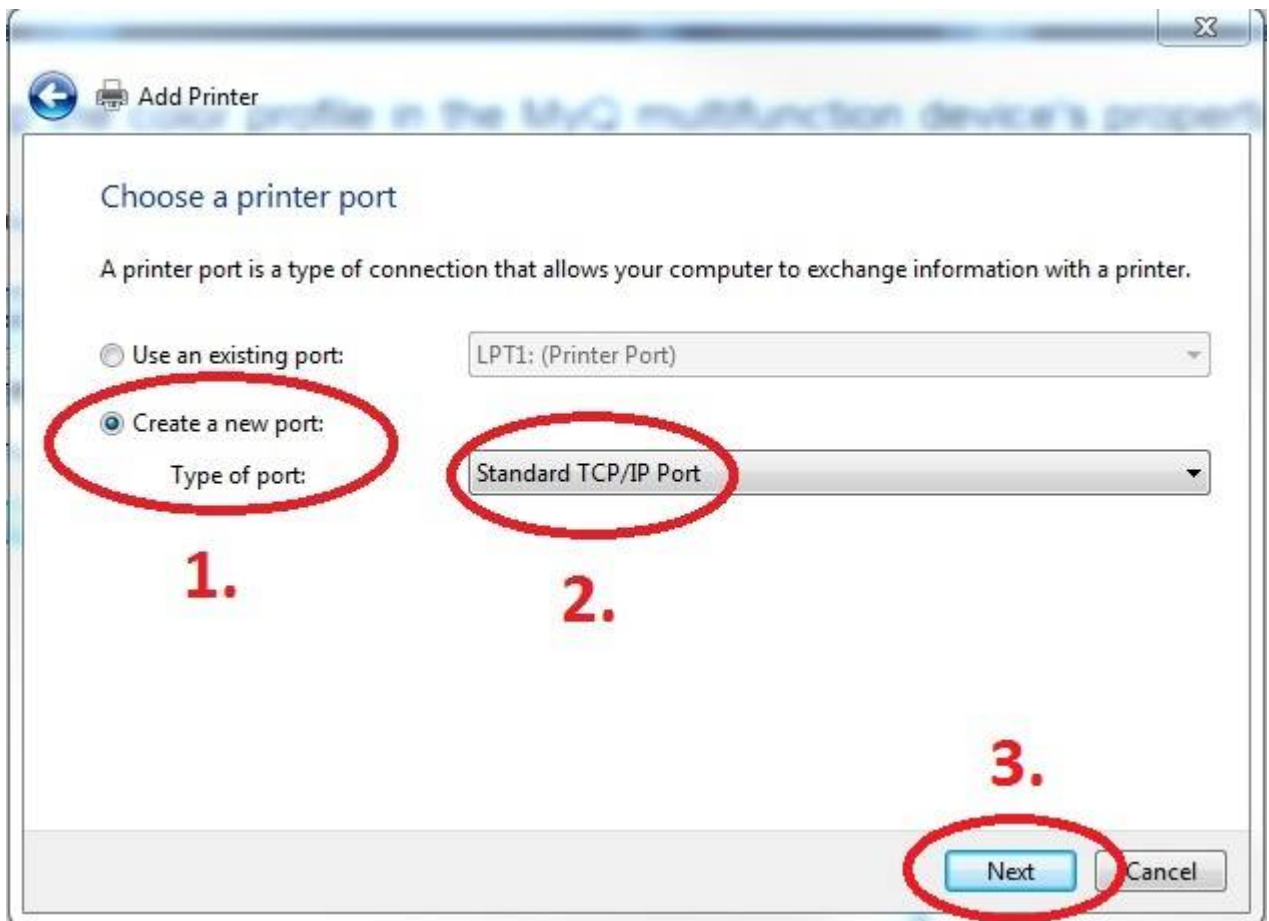
Press Start button → Devices and Printers → Add a Printer



Add a local printer



Create a new port: Standard TCP/IP Port



Enter Hostname - MyQ



Customize Settings

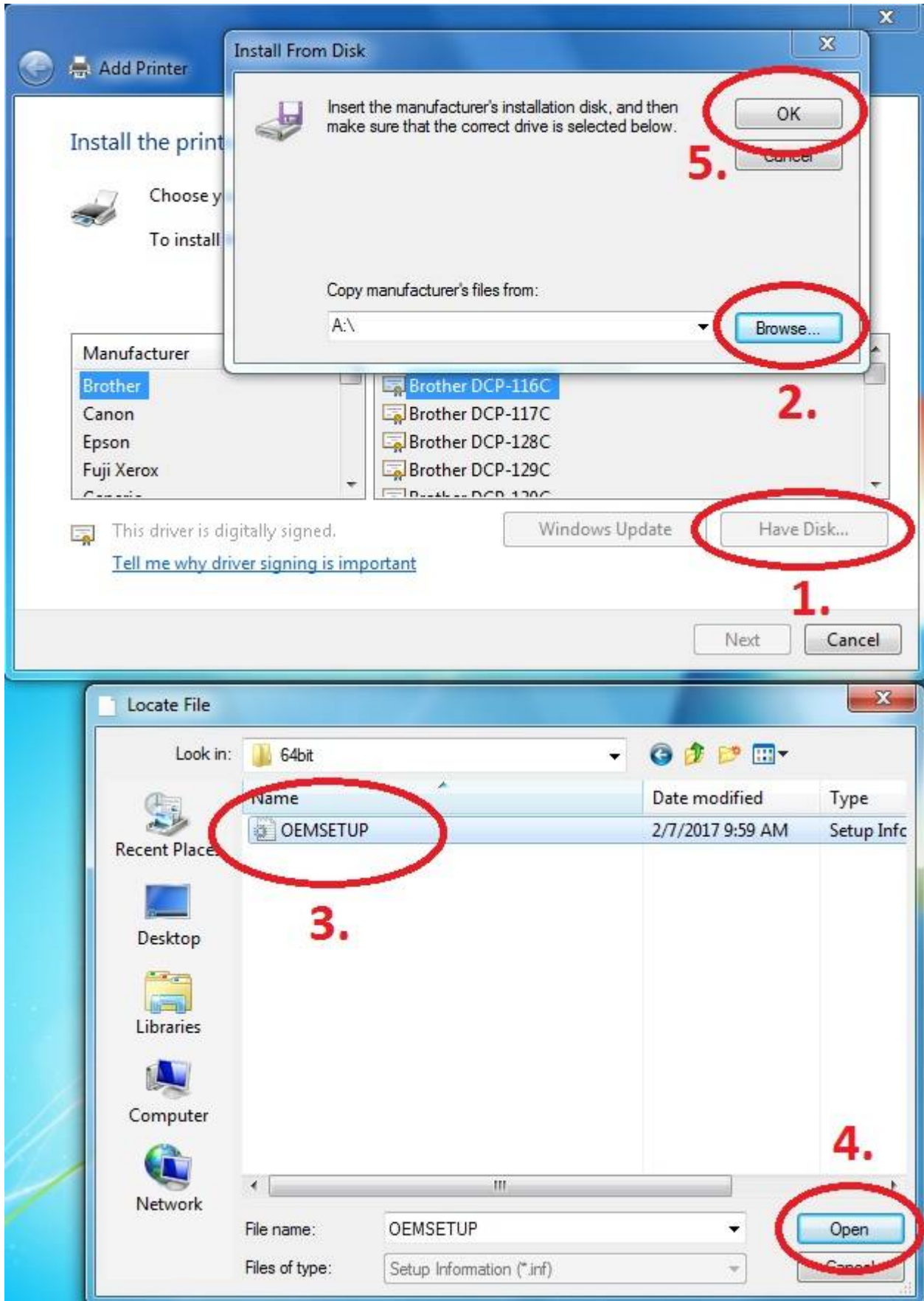


Download driver and unzip it to the local folder (for example c:\driver\). Choose 32-bit or 64-bit version depending on your system:

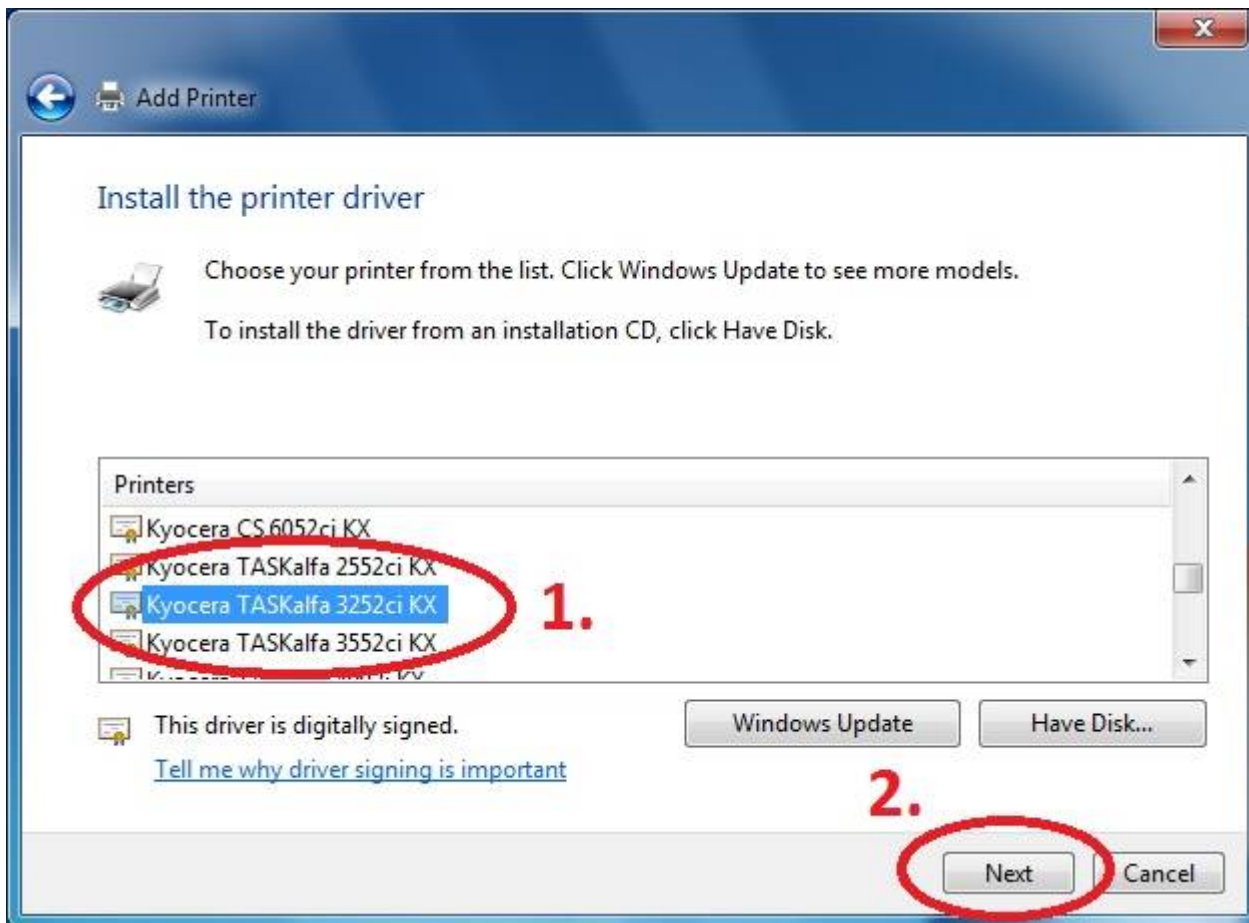
- 32-bit driver

- 64-bit driver

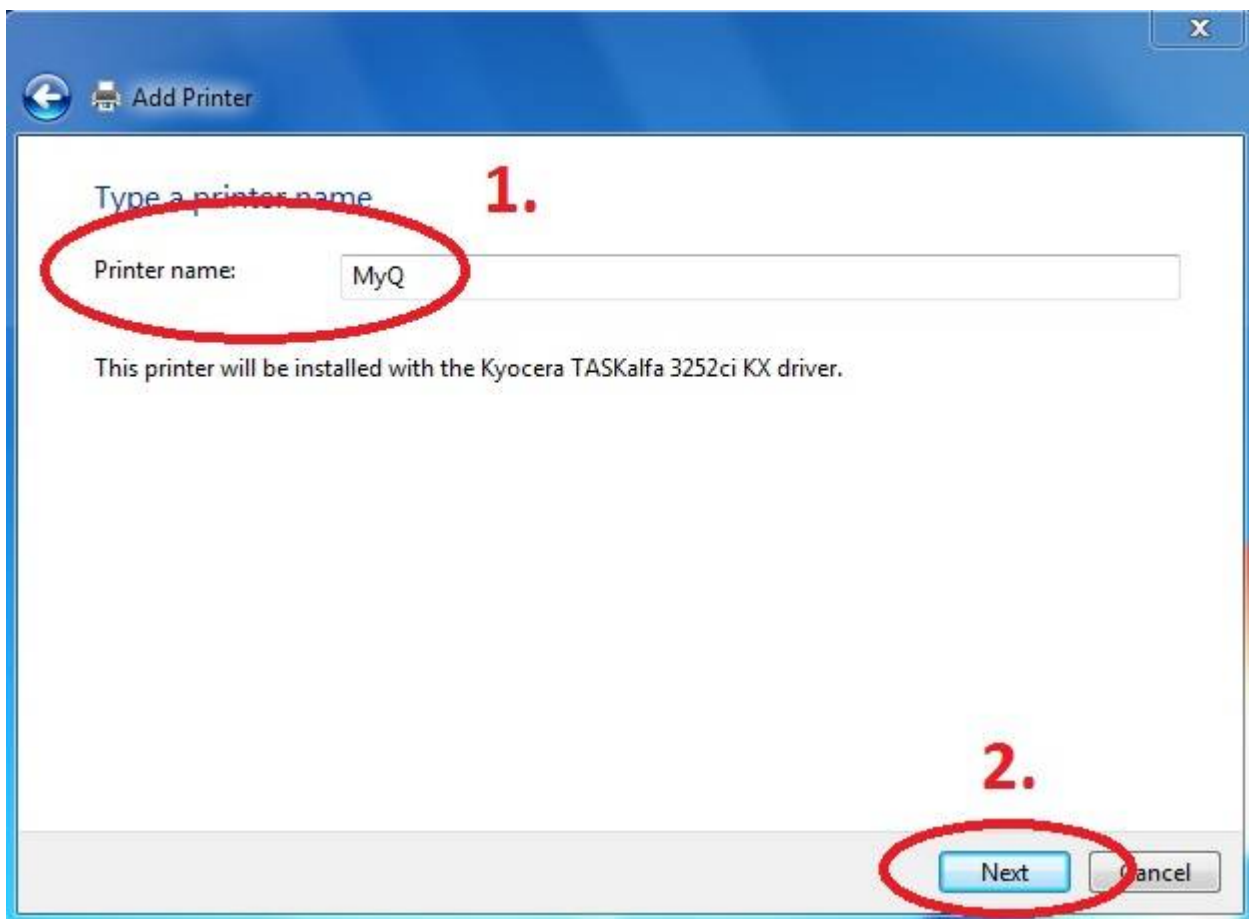
Press Have Disk... Navigate to the driver folder (for example c:\driver\64-bit\) and select **“OEMSETUP”**.



Choose Kyocera TASKalfa 3252ci KX



Rename Printer and finish installation.





After installing the printer, send your username to **helpdesk@cerge-ei.cz** and we will enable your account for printing.

From:

<https://wiki.cerge-ei.cz/> - **CERGE-EI Infrastructure Services**

Permanent link:

https://wiki.cerge-ei.cz/doku.php?id=public:print:myq_install&rev=1510584259

Last update: **2017-11-13 14:44**

