

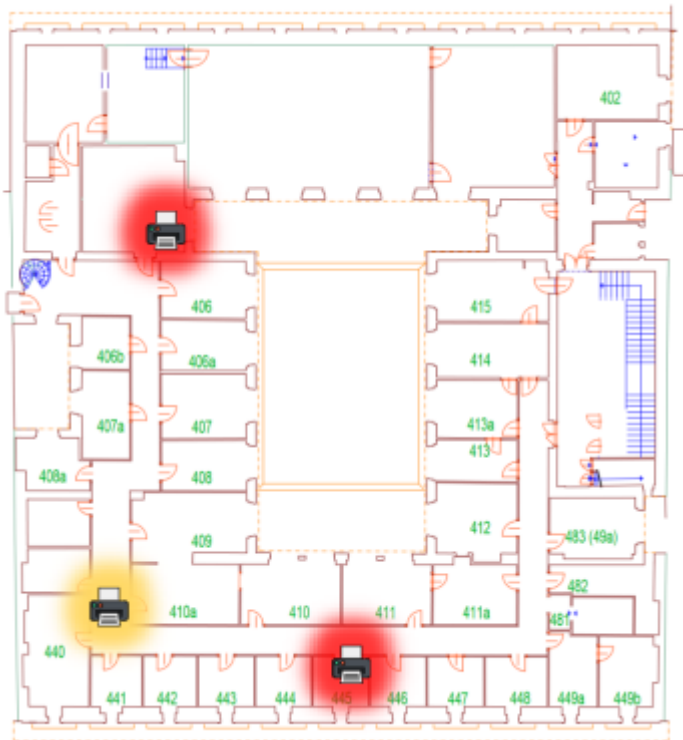
MyQ - Printers location and specifications

TASKalfa 4053ci - Next to PC lab 117 / In locker room next to office 326 / In UPCES study office 405 / In staff lounge 445

TASKalfa 8052ci - Facing office 312

TASKalfa 6053ci - Next to 440 staff lounge





MyQ printers location and specifications
CERGE-EI IT Services | 2022-13-07 | helpdesk@cerge-ei.cz | office 409

MyQ printers are available for staff, researchers, faculty and students. Their location and useful specifications are listed on this one-pager.

Overview

| Printer (TASKalfa) | Scan type | Scan speed | Folding unit | Duplex print | Print speed (mono/color) A4 | Staple (max papers) |
|--------------------|-----------|-----------------------|------------------------|--------------|-----------------------------|---------------------|
| 4053ci | Dual scan | 220 images per minute | Only in PC lab printer | Yes | 40/40 pages per minute | Yes |
| 6053ci | Dual scan | 180 images per minute | Yes | Yes | 60/55 pages per minute | Yes (65 A4/30 A3) |
| 8052ci | Dual scan | 220 images per minute | Yes | Yes | 80/70 pages per minute | Yes (65 A4/30 A3) |

Scan this QR code for detailed location of mentioned printers



In case of any malfunction or empty toners, please contact IT department: helpdesk@cerge-ei.cz (Office 409)

Jakub Novotný – ext.179

Michal Marek – ext.178

If paper is missing, please contact maintenance@cerge-ei.cz (Office 13)

From:

<https://wiki.cerge-ei.cz/> - **CERGE-EI Infrastructure Services**

Permanent link:

https://wiki.cerge-ei.cz/doku.php?id=public:print:myq_location&rev=1663761175

Last update: **2022-09-21 11:52**

