

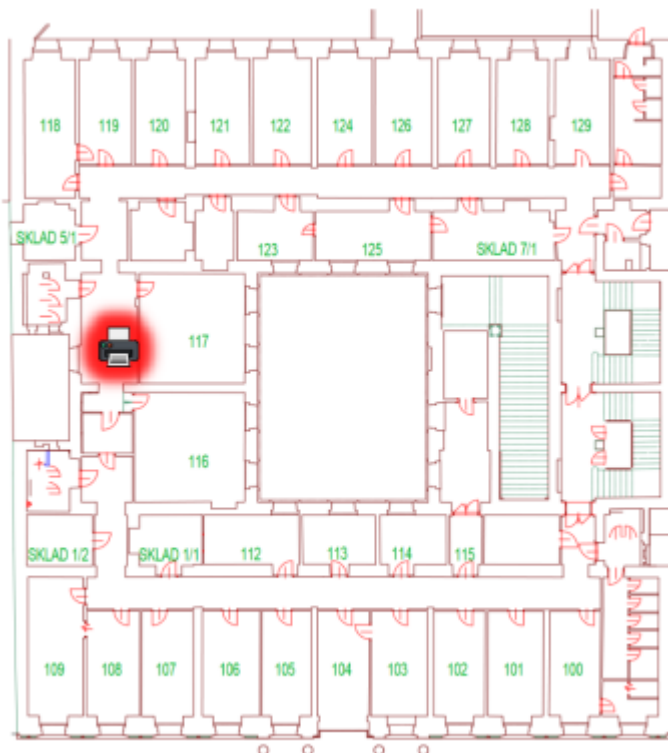
MyQ - Printers location and specifications

TASKalfa 4053ci - Next to PC lab 117 / In locker room next to office 326 / In UPCES study office 405 / In staff lounge 445

TASKalfa 8052ci - Facing office 312

TASKalfa 6053ci - Next to 440 staff lounge

[myq_printers_location_and_functions.pdf](#)





MyQ printers location and specifications

CERGE-EI IT Services | 2022-13-07 | helpdesk@cerge-ei.cz | office 409

MyQ printers are available for staff, researchers, faculty and students. Their location and useful specifications are listed on this one-pager.

Overview

Printer (TASKalfa)	Scan type	Scan speed	Folding unit	Duplex print	Print speed (mono/color) A4	Staple (max papers)
4053ci	Dual scan	220 images per minute	Only in PC lab printer	Yes	40/40 pages per minute	Yes
6053ci	Dual scan	180 images per minute	Yes	Yes	60/55 pages per minute	Yes (65 A4/30 A3)
8052ci	Dual scan	220 images per minute	Yes	Yes	80/70 pages per minute	Yes (65 A4/30 A3)

Scan this QR code for detailed location of mentioned printers



In case of any malfunction or empty toners, please contact IT department: helpdesk@cerge-ei.cz (Office 409)

Jakub Novotný – ext.179

Michal Marek – ext.178

If paper is missing, please contact maintenance@cerge-ei.cz (Office 13)

From: <https://wiki.cerge-ei.cz/> - **CERGE-EI Infrastructure Services**

Permanent link: https://wiki.cerge-ei.cz/doku.php?id=public:print:myq_location&rev=1663761791

Last update: **2022-09-21 12:03**

