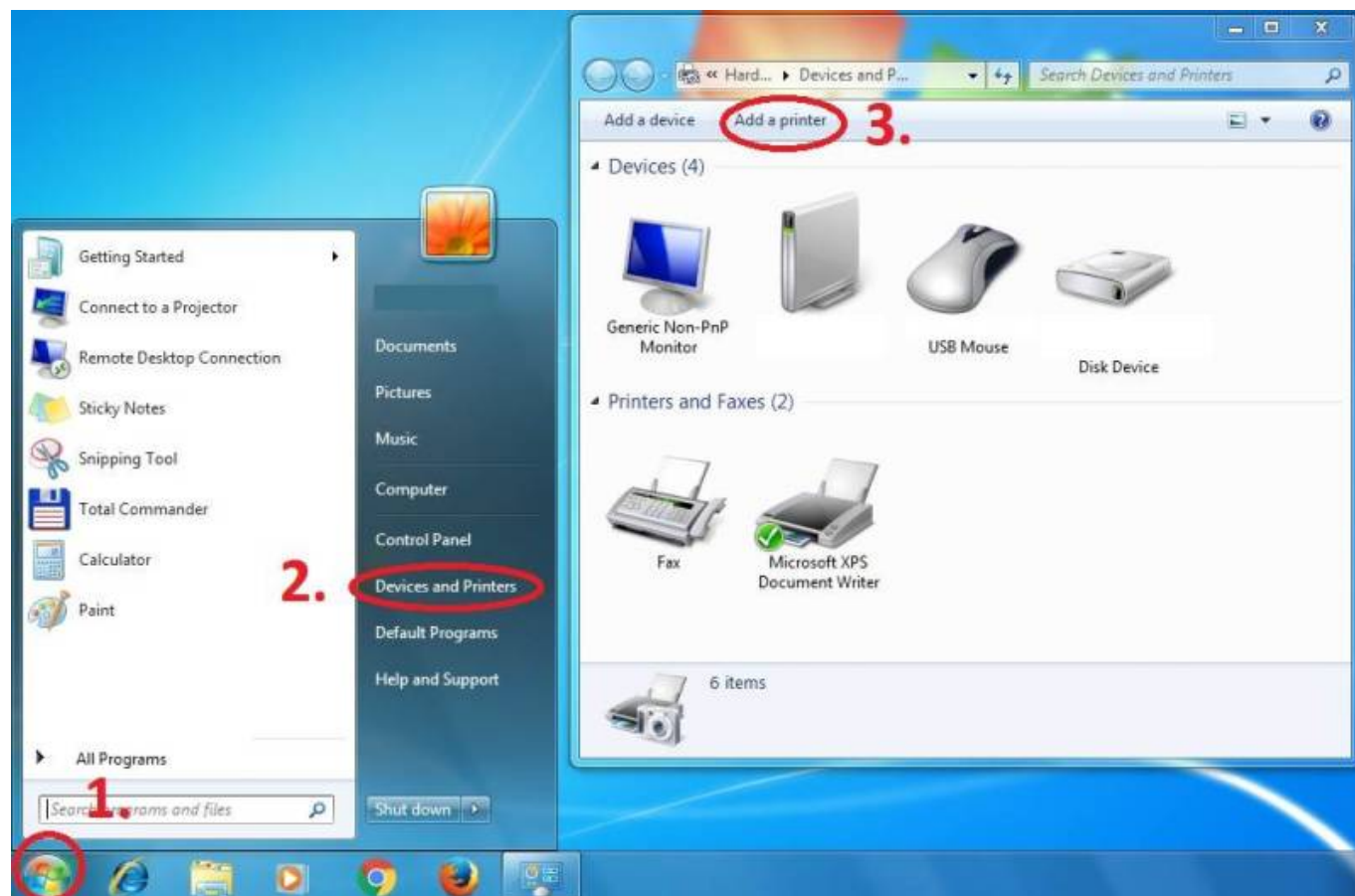


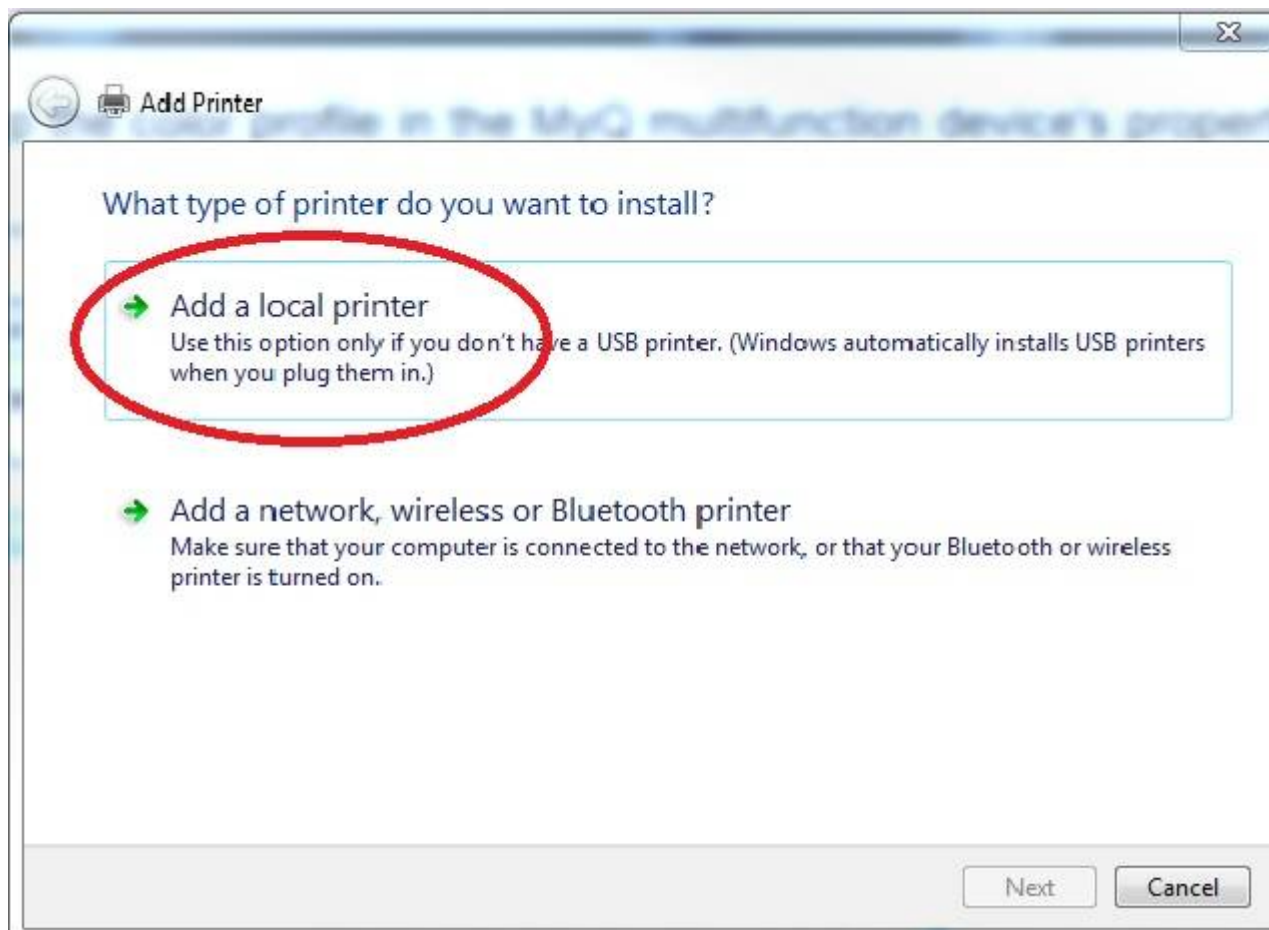
Instructions for adding a Kyocera printer to user stations

Important: notebook must be connected to WiFi residents !!! (libairfree WiFi is not supported)

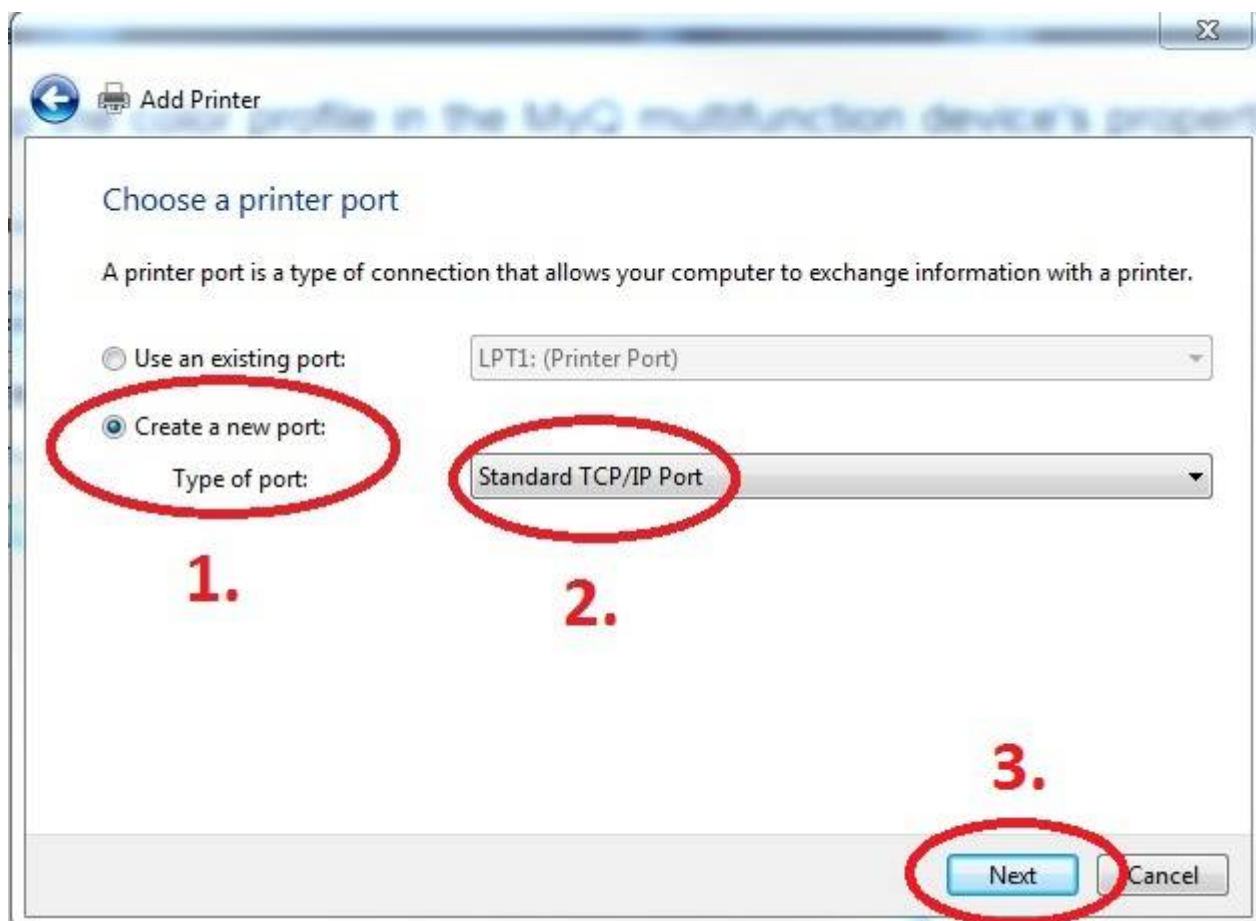
Press Start button→ Devices and Printers → Add a Printer

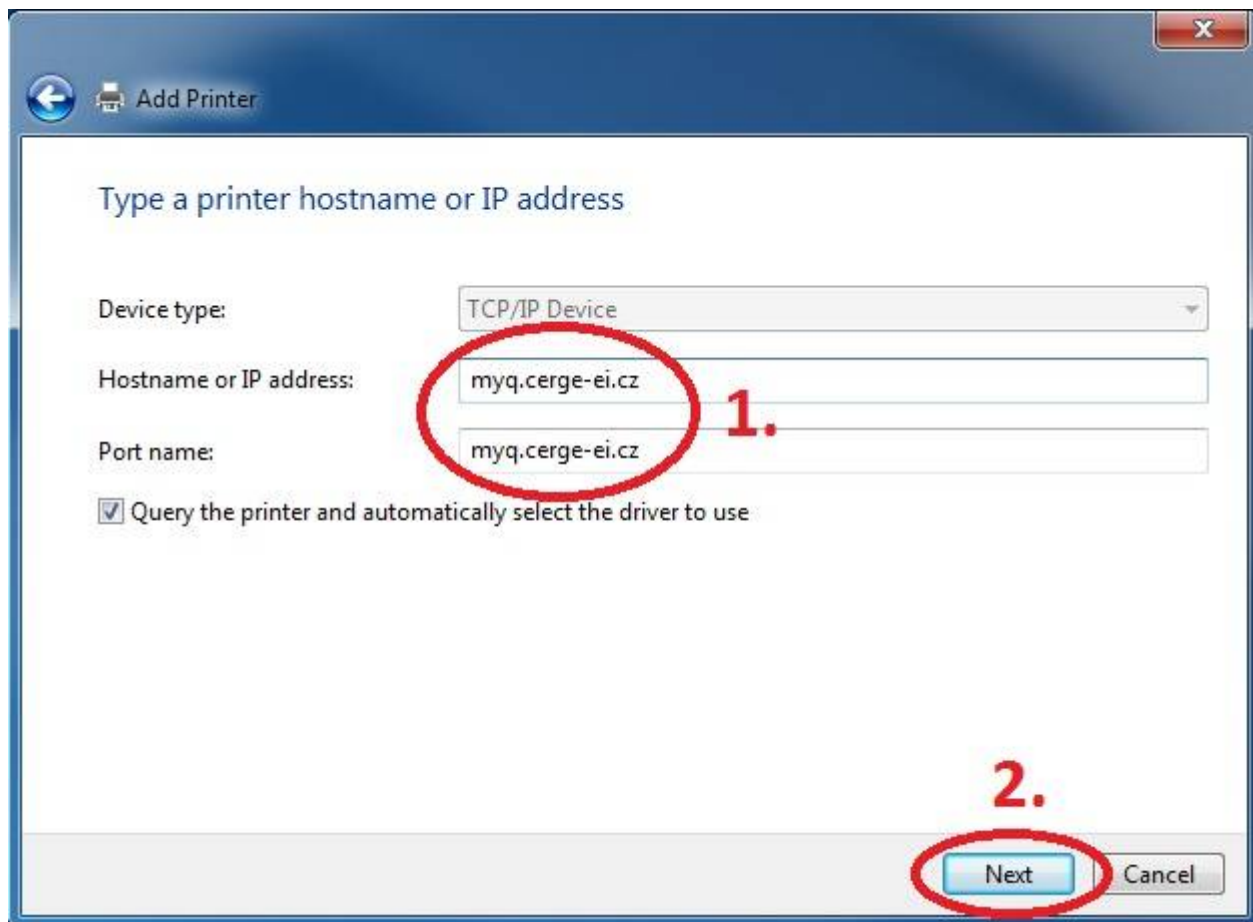


Add a local printer



Create a new port: Standard TCP/IP Port



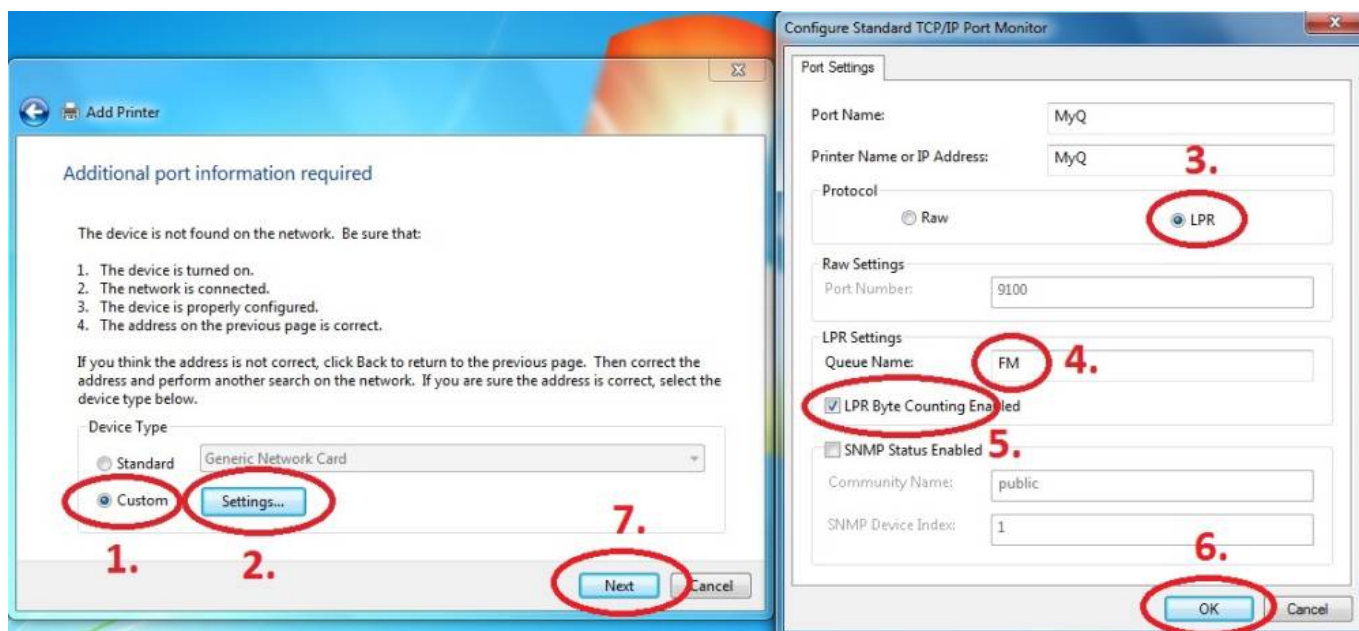
Enter Hostname - myq.cerge-ei.cz**Customize Settings**

Important settings (check twice)

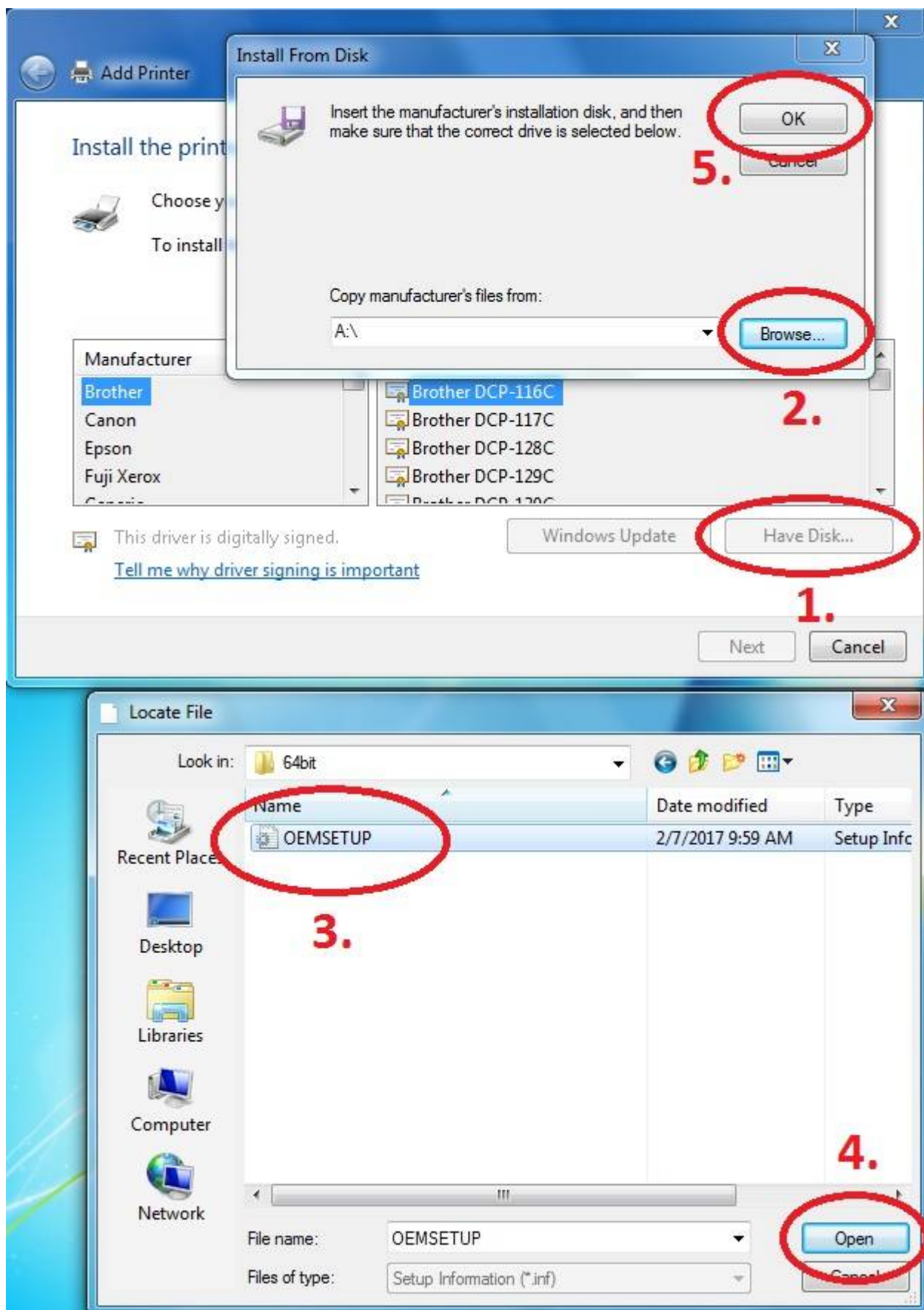


- Protocol: **LPR (LPD)**
- Queue name: **FM**
- [x] **LPR Byte Counting Enabled**

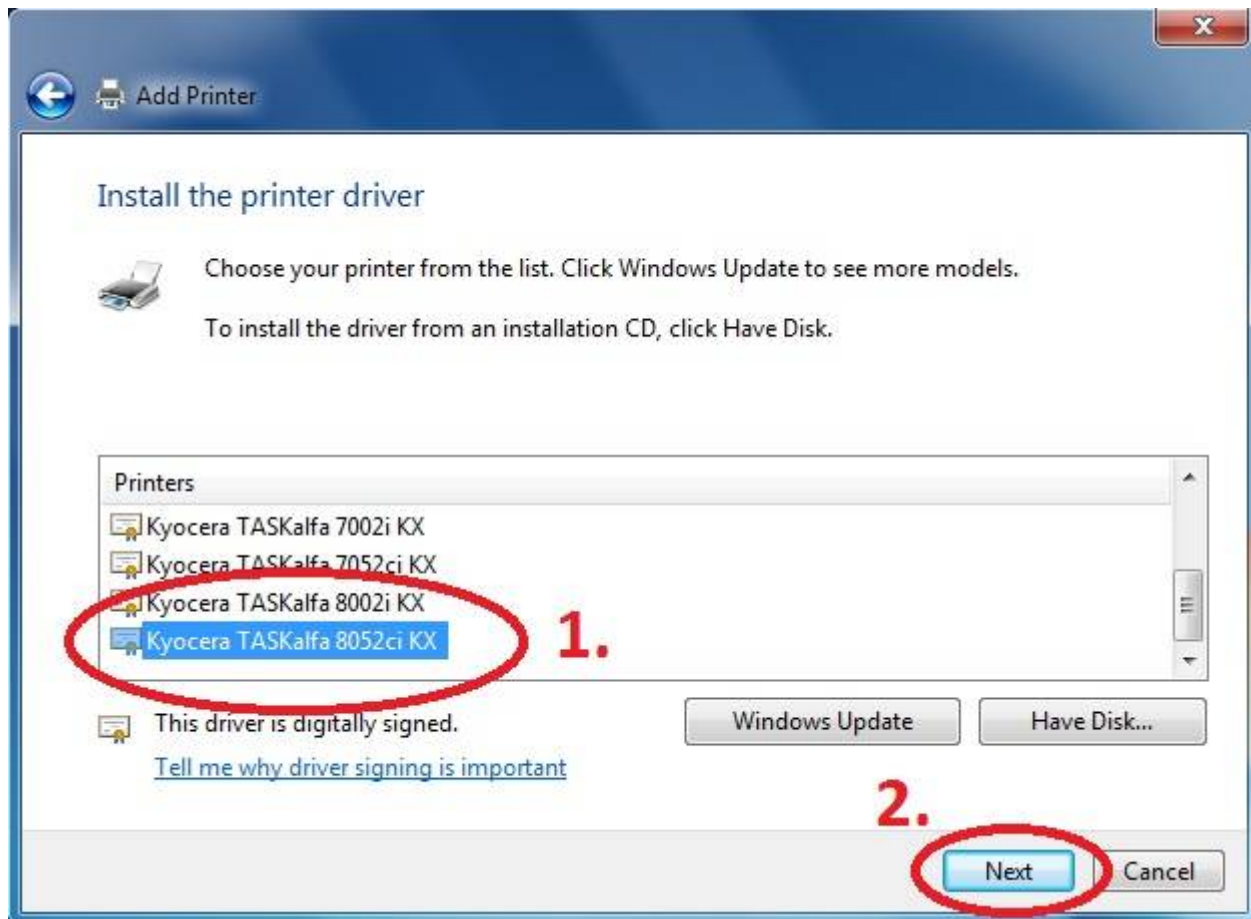
`lpd:myq.cerge-ei.cz/FM`



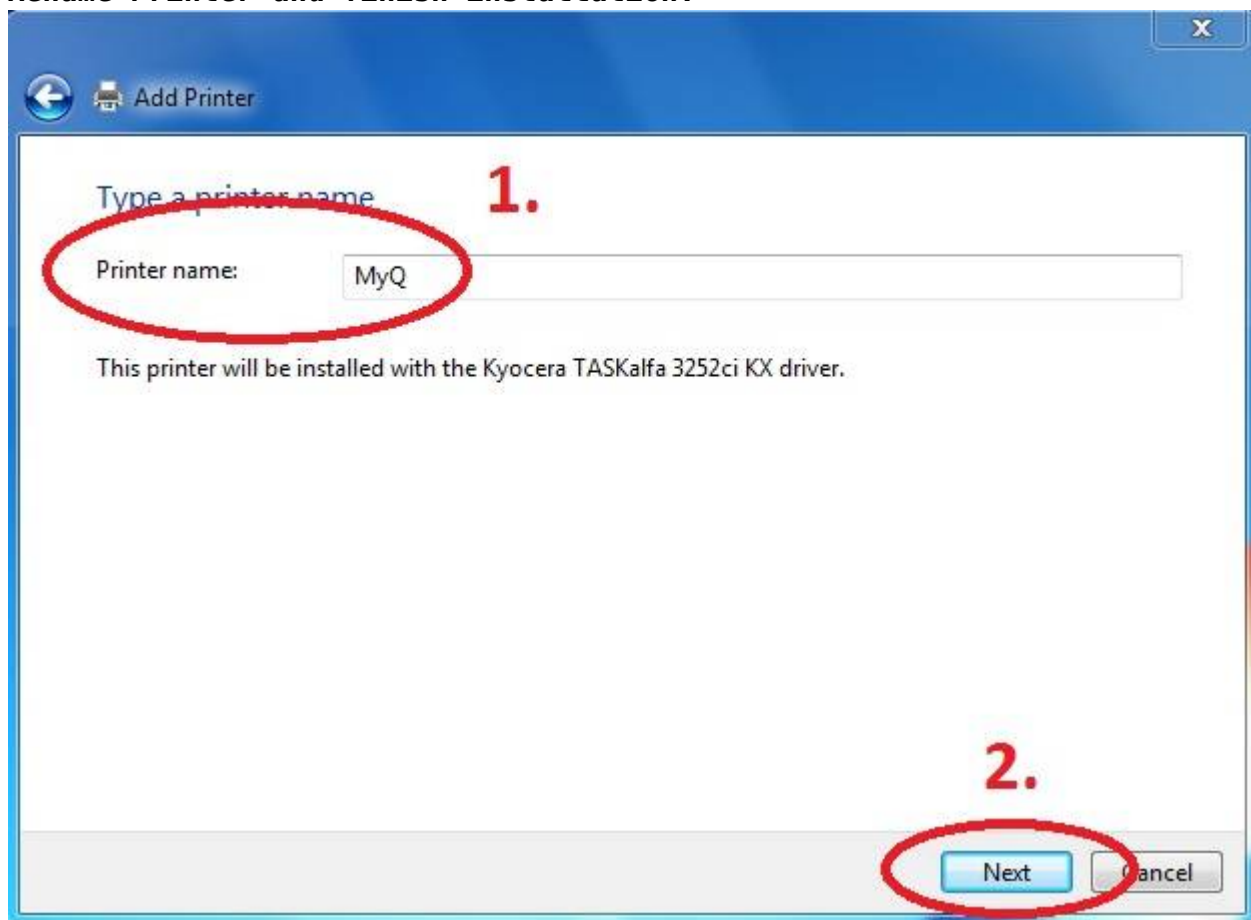
Download driver and unzip it to the local folder (for example c:\driver\). Choose 32-bit or 64-bit version depending on your system: - 32-bit driver - 64-bit driver Mac OS: OS X 10.8 - 10.13 Mac OS X 10.5 and newer Press Have Disk... Navigate to the driver folder (for example c:\driver\64-bit\) and select "OEMSETUP".**



Choose Kyocera TASKalfa 8052ci KX



Rename Printer and finish installation.





After installing the printer, send your local username on the notebook to

helpdesk@cerge-ei.cz and we will allow printing for your account.

For Advanced settings go to: https://itinfo.cerge-ei.cz/doku.php?id=public:print:kyocera_profile**

From:

<https://wiki.cerge-ei.cz/> - **CERGE-EI Infrastructure Services**

Permanent link:

https://wiki.cerge-ei.cz/doku.php?id=public:print:myq_notebooks&rev=1578915291

Last update: **2020-01-13 11:34**

