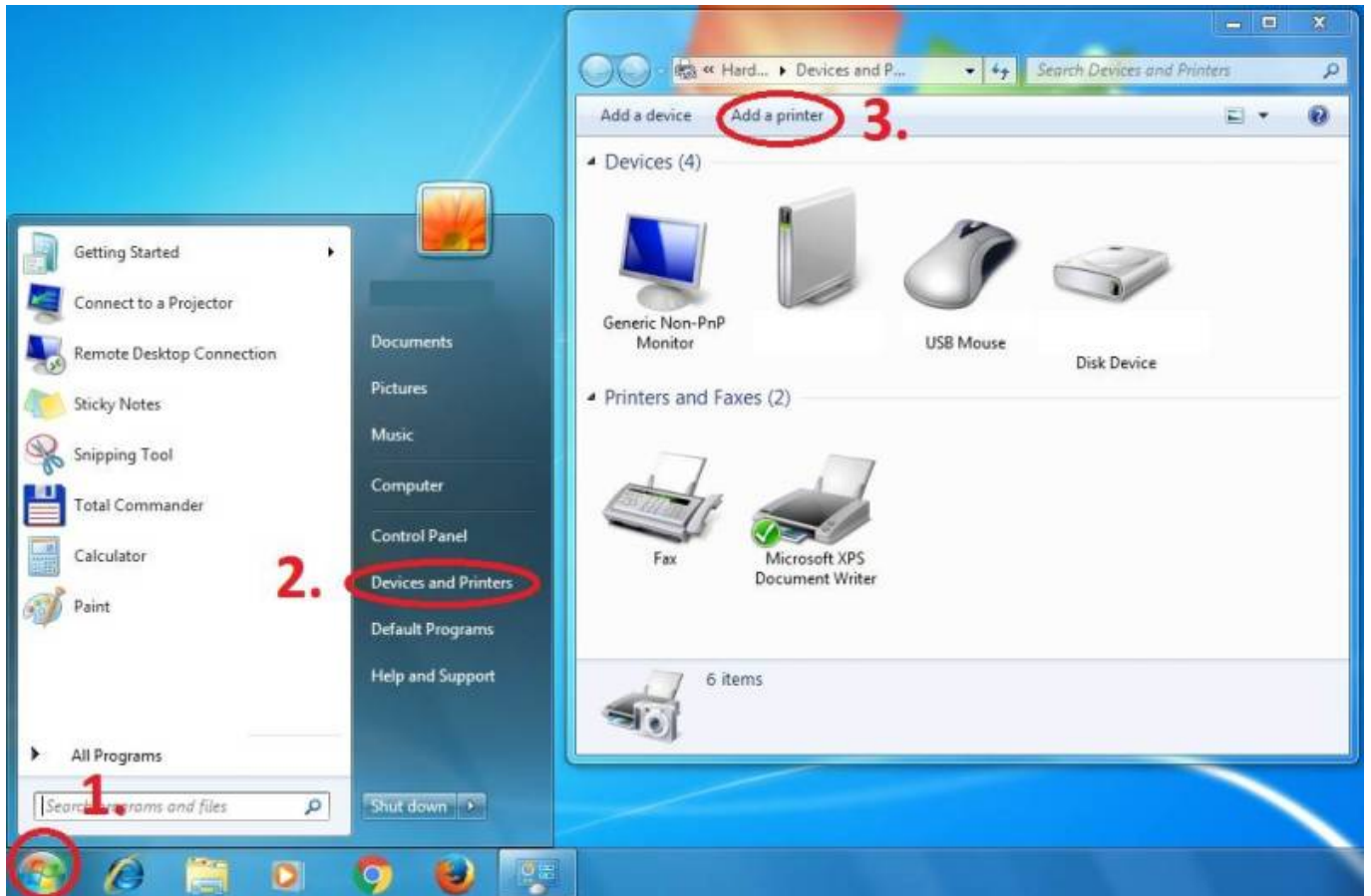


Instructions for adding a Kyocera printer to user stations

Important: notebook must be connected to WiFi residents !!! (libairfree WiFi is not supported)

Press Start button → Devices and Printers → Add a Printer



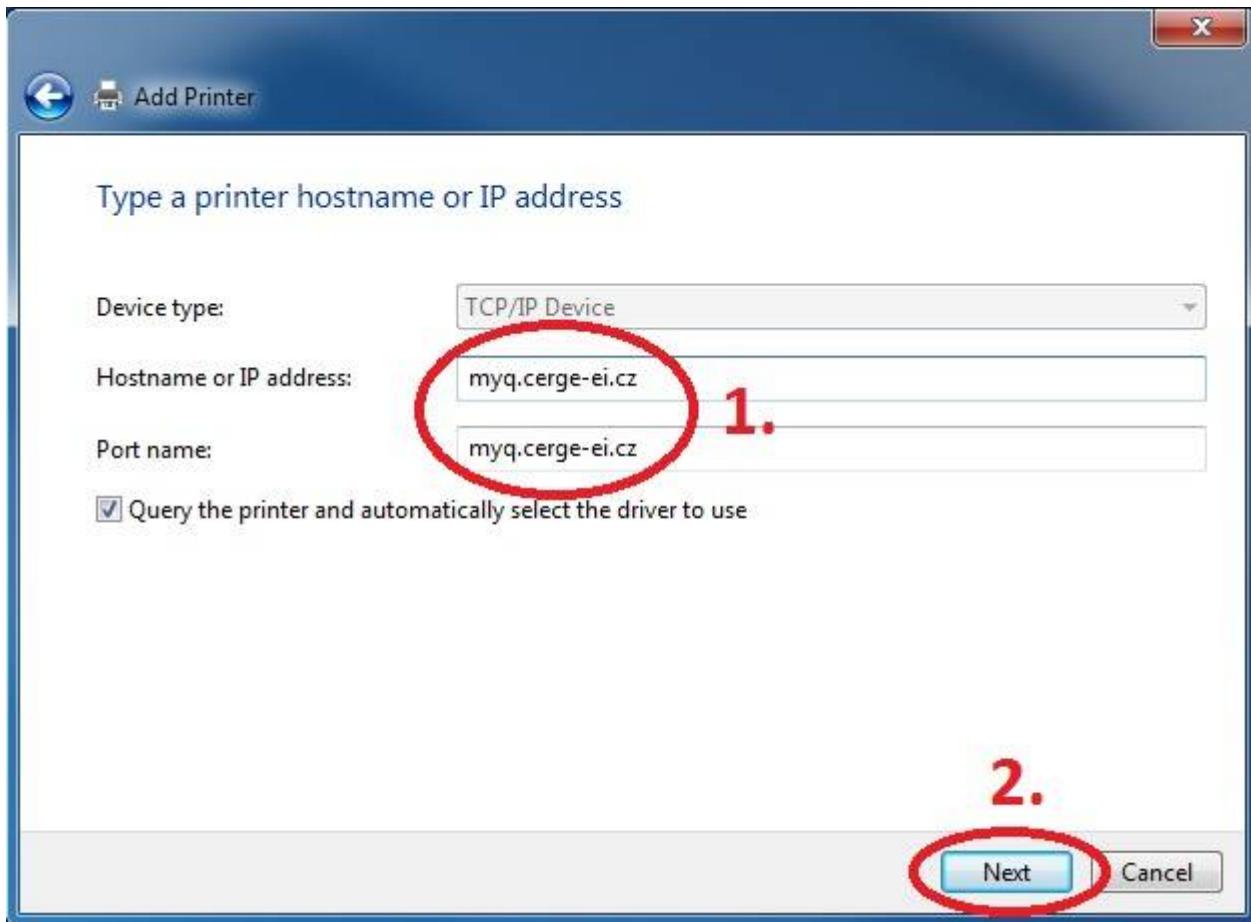
Add a local printer



Create a new port: Standard TCP/IP Port



Enter Hostname - myq.cerge-ei.cz

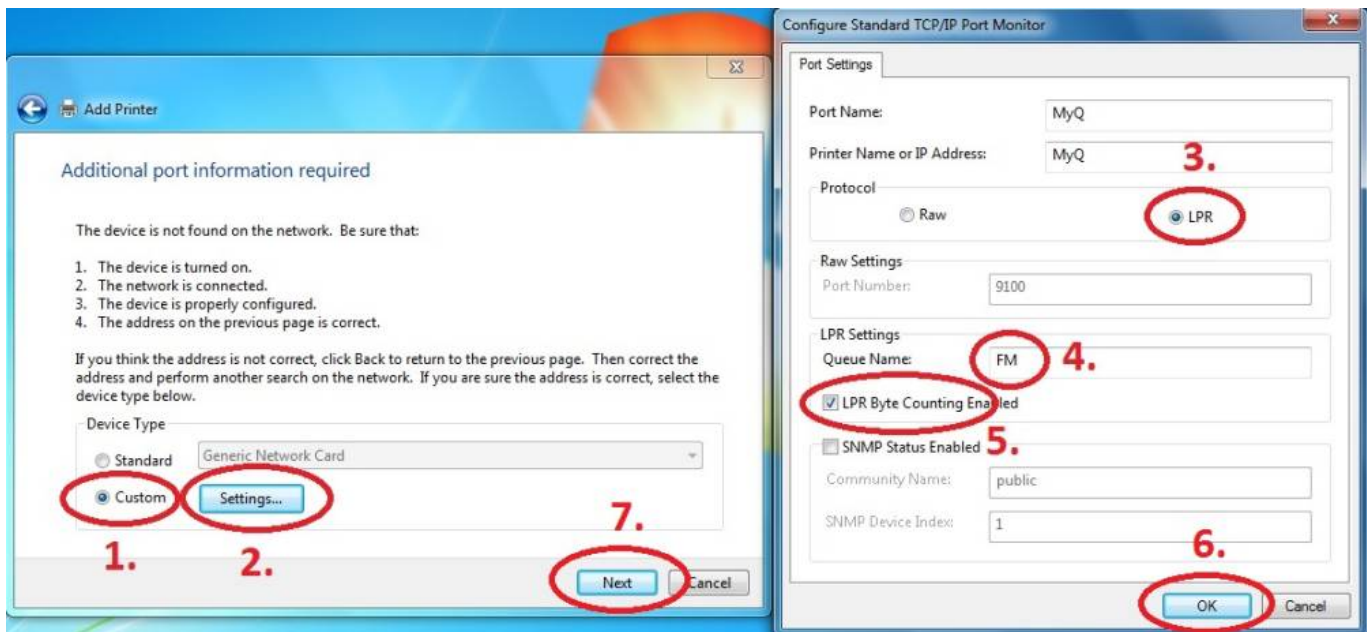


Customize Settings

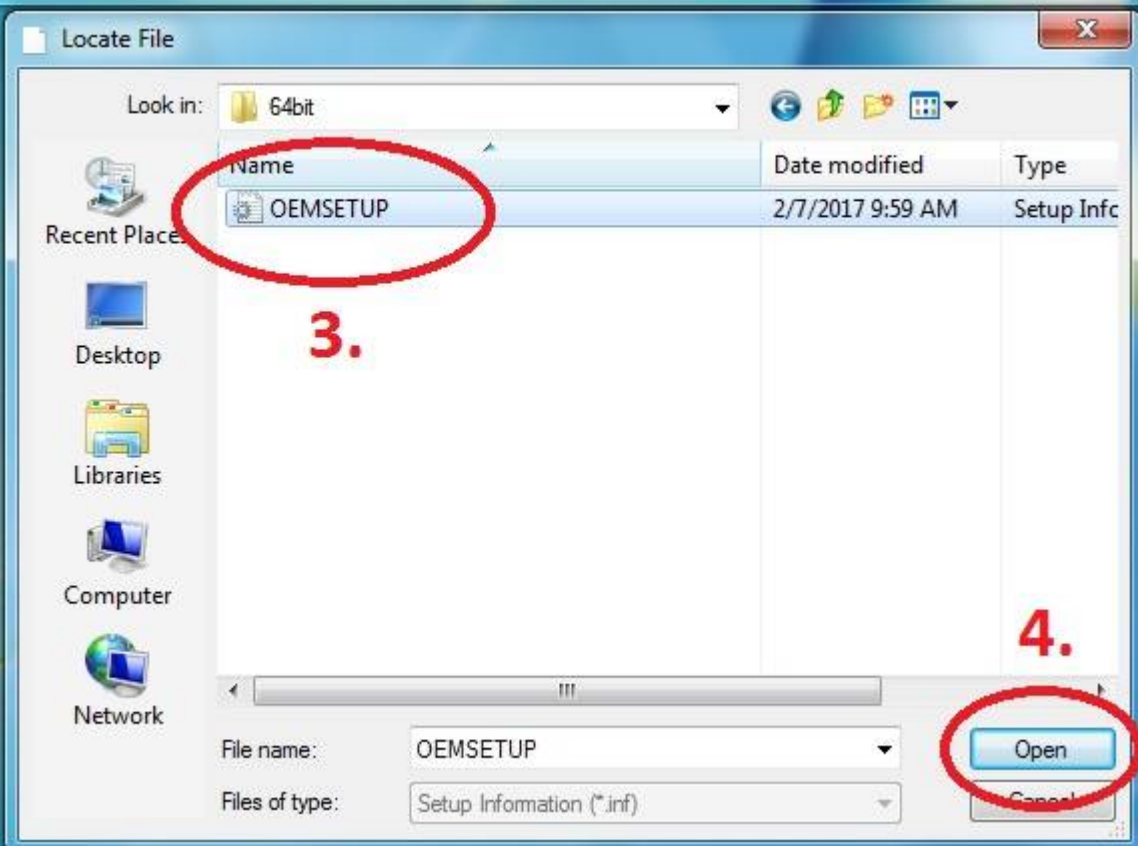
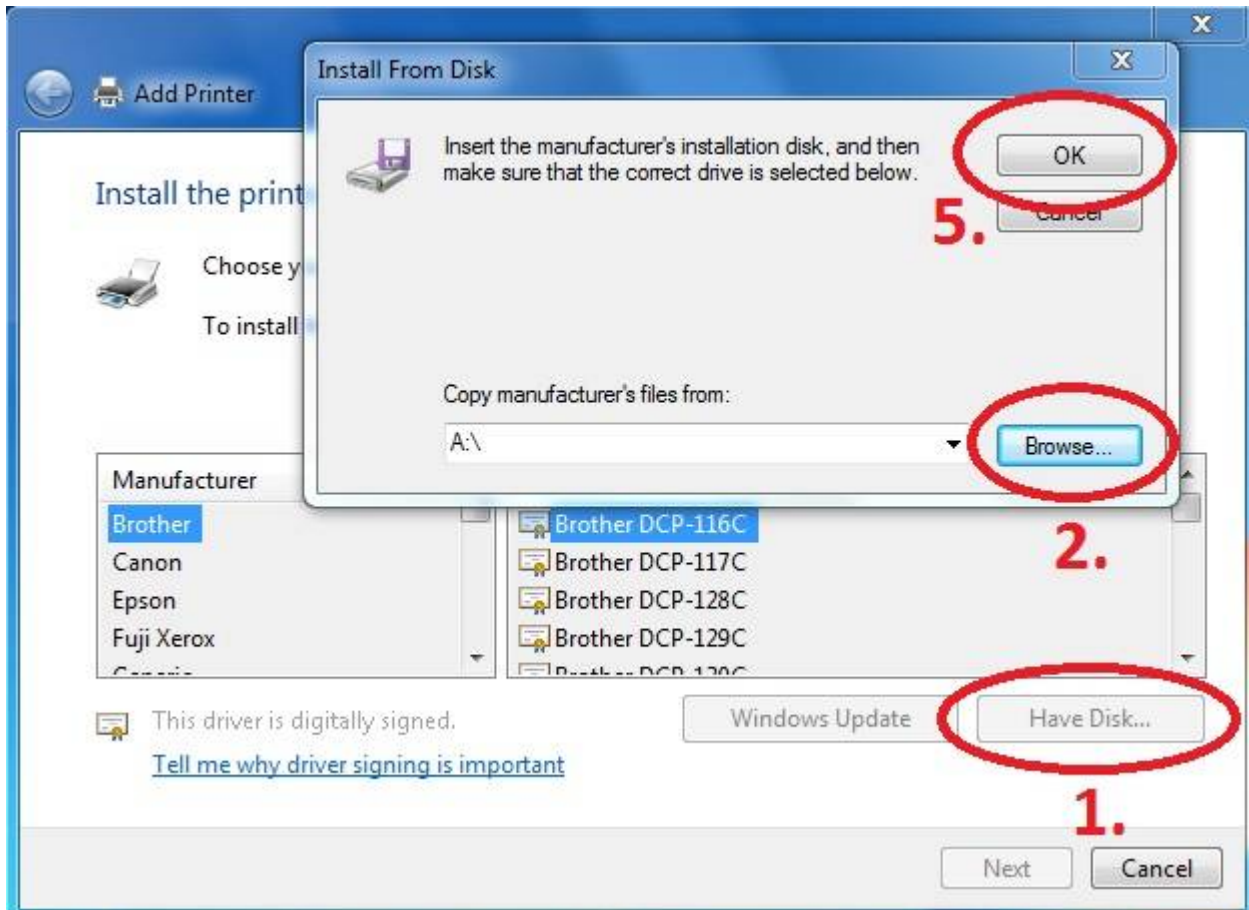
Important settings (check twice 😊)

- Protocol: **LPR (LPD)**
- Queue name: **FM**
- [x] **LPR Byte Counting Enabled**

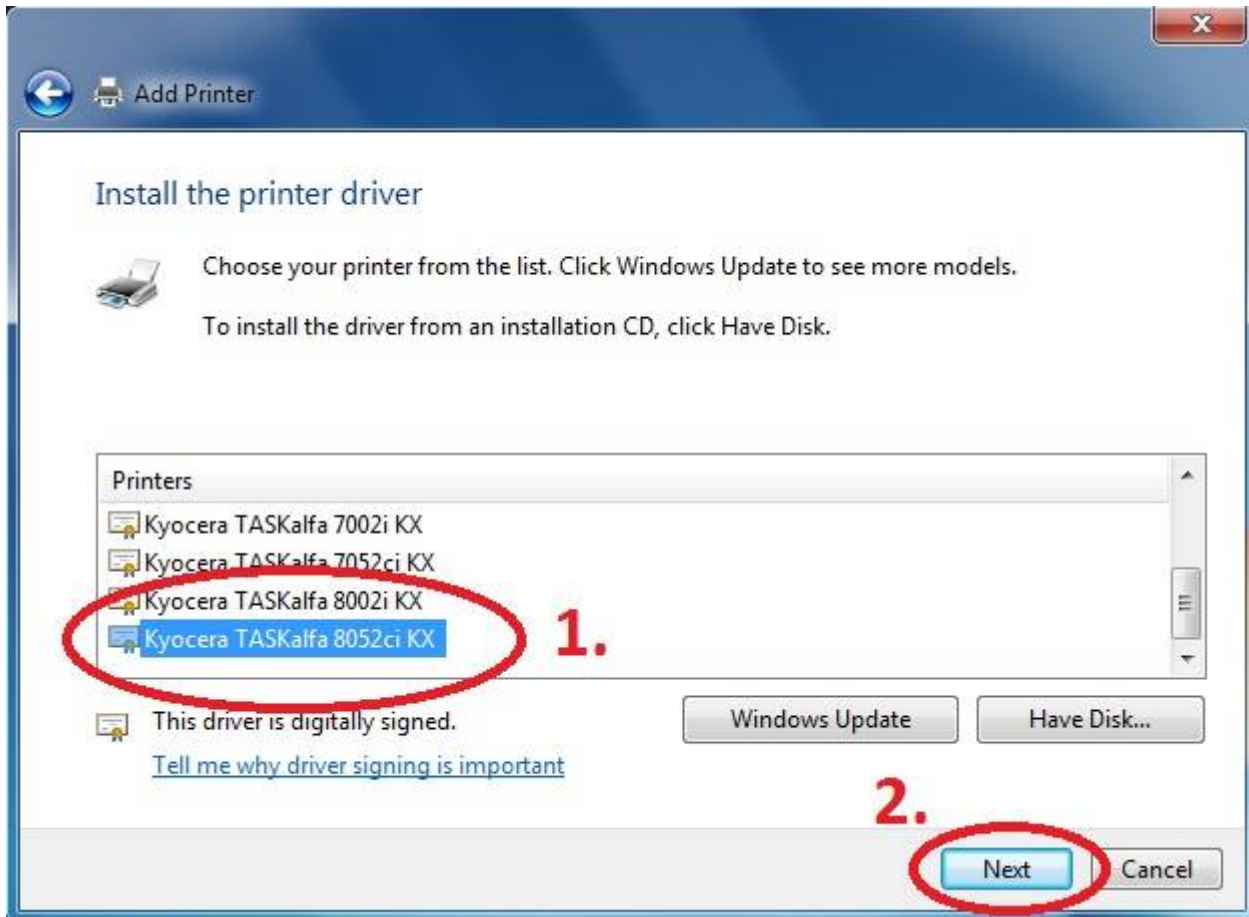
```
**Queue link: lpd://myq.cerge-ei.cz/FM**
```



Download driver and unzip it to the local folder (for example c:\driver\). Choose 32-bit or 64-bit version depending on your system:- 32-bit driver- 64-bit driver Mac OS: OS X 10.8 - 10.13Mac OS X 10.5 and newerPress Have Disk... Navigate to the driver folder (for example c:\driver\64-bit\)** and select **"OEMSETUP"**.

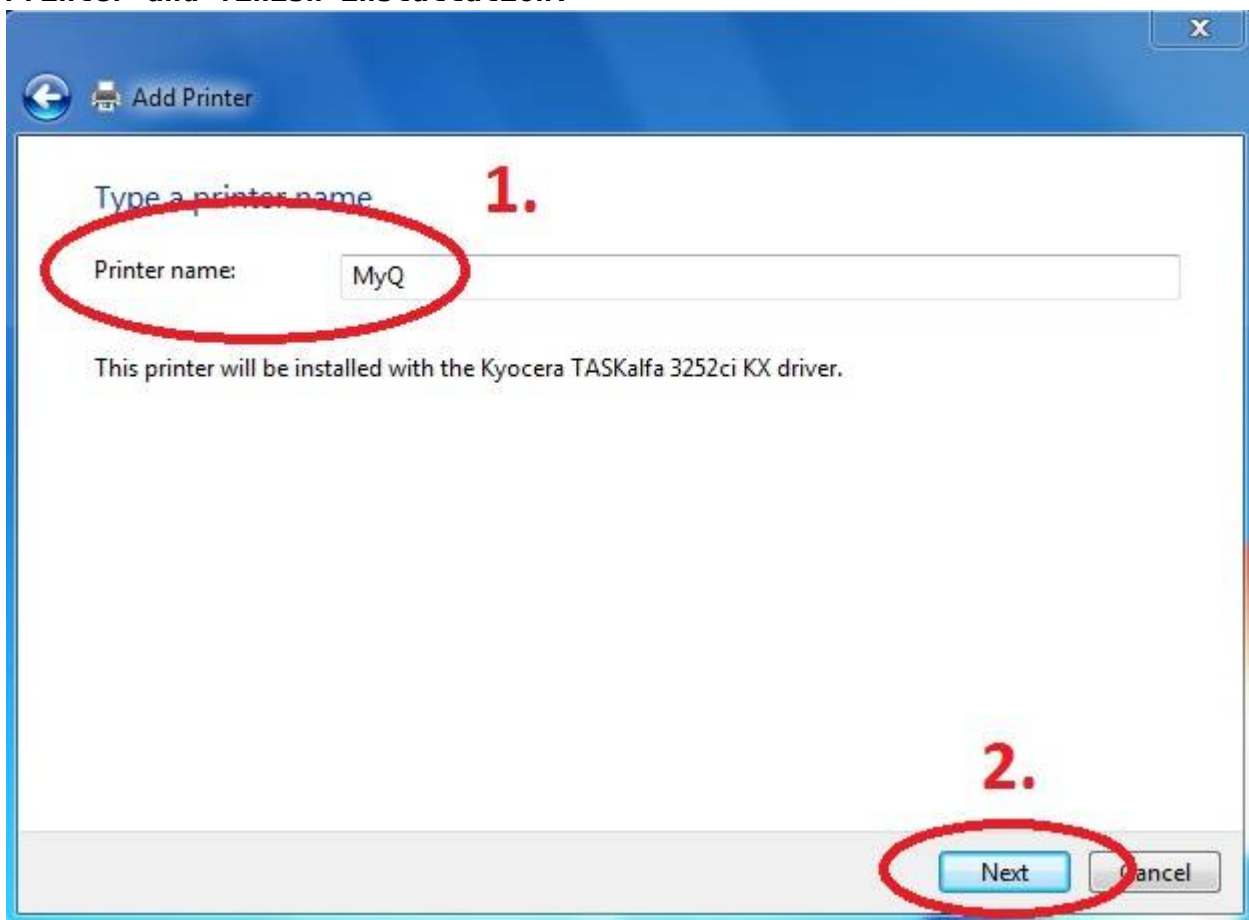



Choose
Kyocera TASKalfa 8052ci KX



Rename

Printer and finish installation.



 After installing the printer, send your local username on the notebook to **helpdesk@cerge-ei.cz** and we will allow printing for your account.

For Advanced settings go to: https://itinfo.cerge-ei.cz/doku.php?id=public:print:kyocera_profile **''

From:
<https://wiki.cerge-ei.cz/> - **CERGE-EI Infrastructure Services**

Permanent link:
https://wiki.cerge-ei.cz/doku.php?id=public:print:myq_notebooks&rev=1578915399

Last update: **2020-01-13 11:36**

