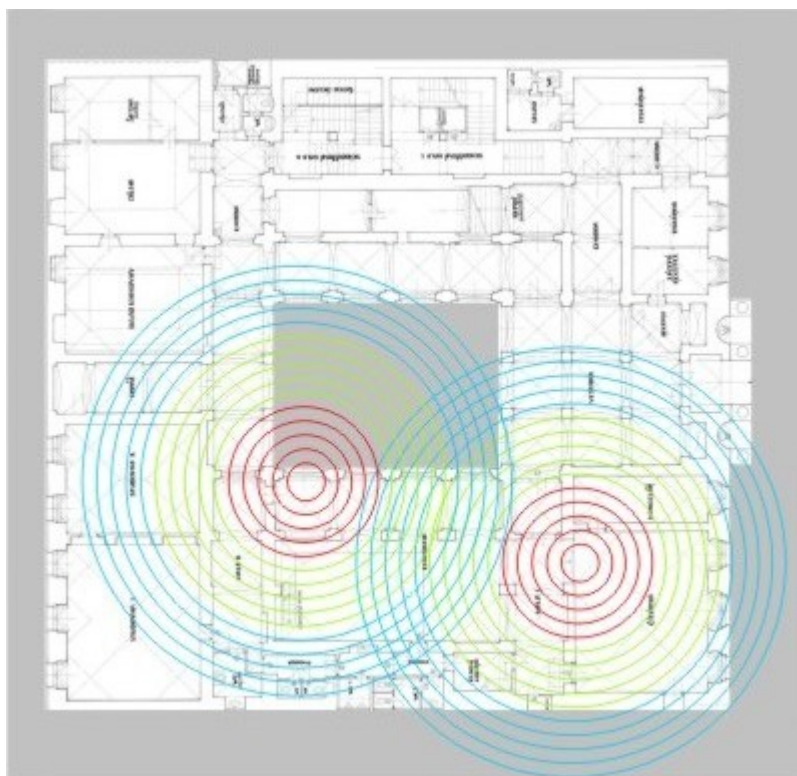


# Wi-Fi Network Connection

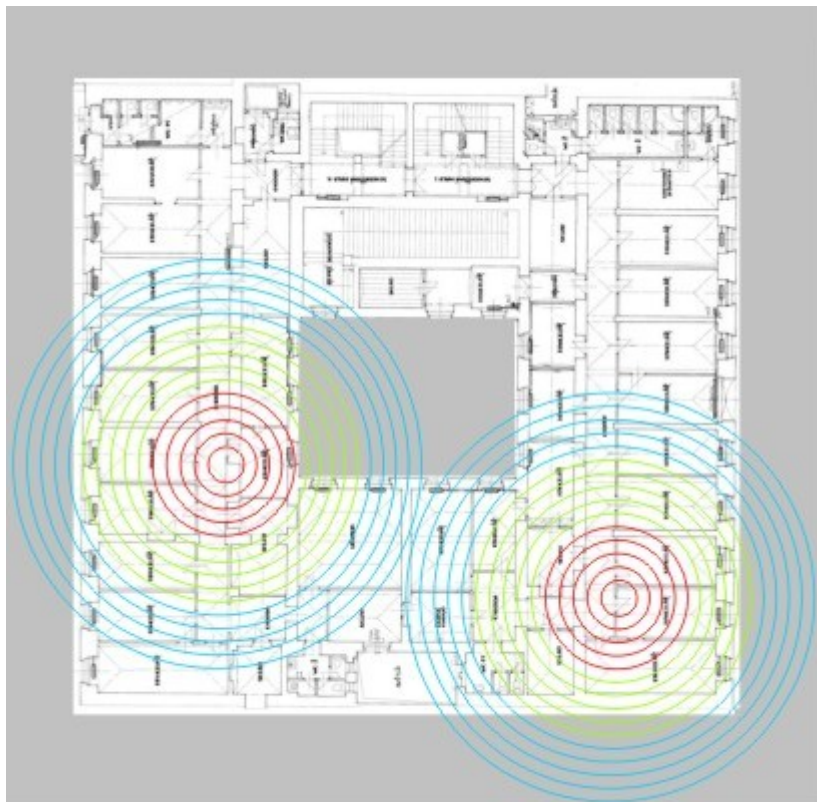
There are 16 wireless access points (AP) installed all over the building. The APs are compliant with IEEE 802.11ag standard and are centrally managed by wireless controller. Within CERGE-EI LAN there are two private networks set up for wireless connection purposes. One is for Wi-Fi network **LIBAIRFREE** and the other for Wi-Fi network **CERGE-EI**. Network address translation is used for outgoing traffic both to LAN and internet (private network addresses are hidden behind a single IP address in a public address space). The Wi-Fi network LIBAIRFREE serves only for free Internet access via simple web authentication (username, password: cerge, welcome). The Wi-Fi network CERGE-EI enables WAP2 encrypted access to CERGE-EI LAN. The WAP2 key will be installed on user's wi-fi equipment by the Computer Office staff upon checking the equipment, if it's free of viruses and with proper security software installed.

## Wi-Fi Access Points Location

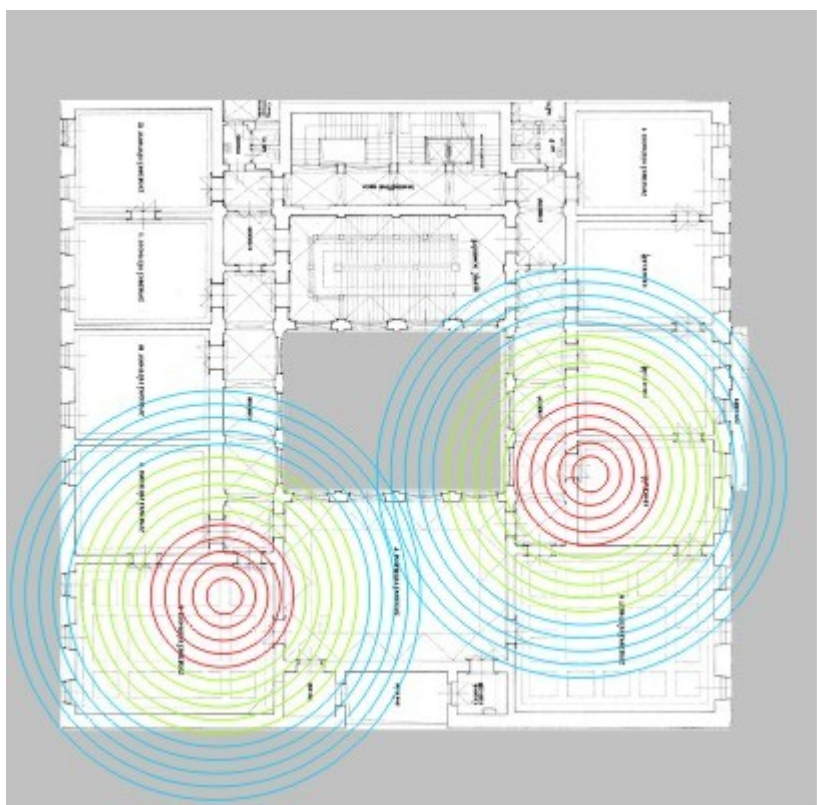
### Ground Floor



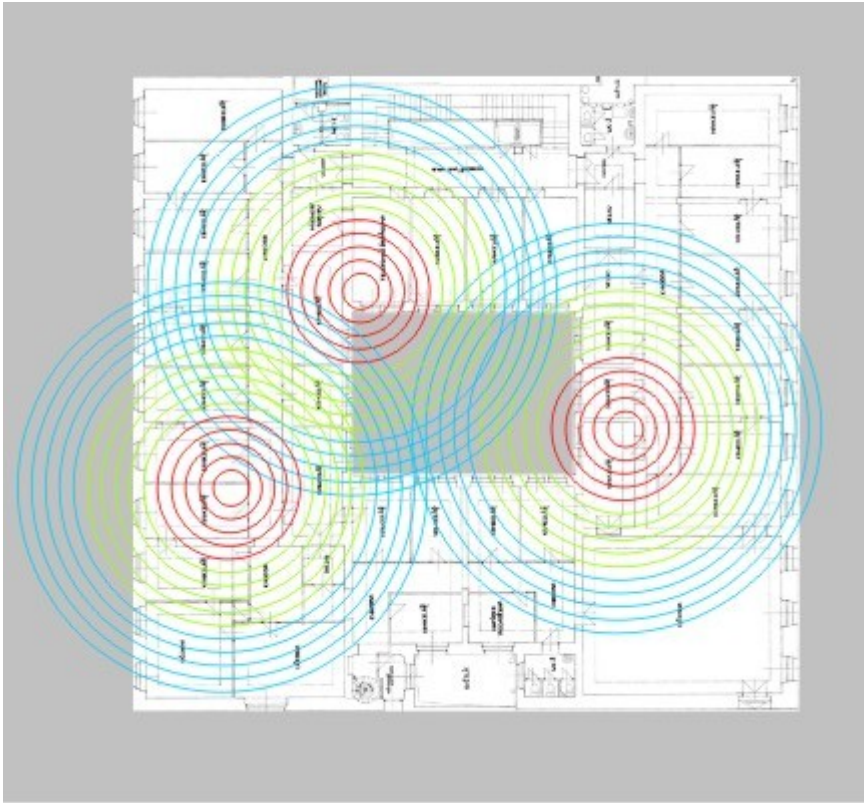
### 1st Floor



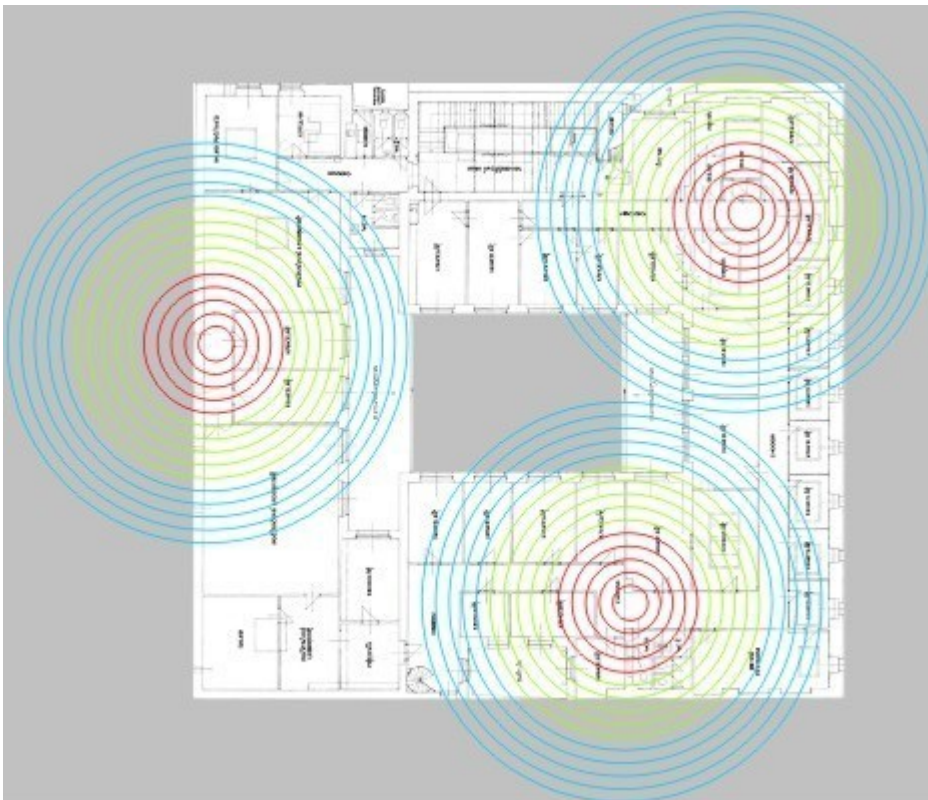
2nd Floor



3rd Floor



4th Floor



From:

<https://wiki.cerge-ei.cz/> - **CERGE-EI Infrastructure Services**

Permanent link:

<https://wiki.cerge-ei.cz/doku.php?id=public:wifi&rev=1473257038>

Last update: **2016-09-07 14:03**

